

Product datasheet for **TA345324**

DMTF1 Rabbit Polyclonal Antibody

Product data:

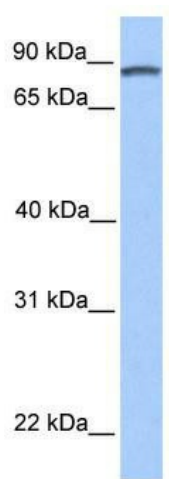
Product Type:	Primary Antibodies
Applications:	WB
Recommended Dilution:	WB
Reactivity:	Human, Rat
Host:	Rabbit
Isotype:	IgG
Clonality:	Polyclonal
Immunogen:	The immunogen for anti-DMTF1 antibody: synthetic peptide directed towards the C terminal of human DMTF1. Synthetic peptide located within the following region: VIDTESVLPLTTLTDPILQHHQEESNIIGSSLGSPVSEDSKDVEDLVNCH
Formulation:	Liquid. Purified antibody supplied in 1x PBS buffer with 0.09% (w/v) sodium azide and 2% sucrose. <i>Note that this product is shipped as lyophilized powder to China customers.</i>
Purification:	Affinity Purified
Conjugation:	Unconjugated
Storage:	Store at -20°C as received.
Stability:	Stable for 12 months from date of receipt.
Predicted Protein Size:	84 kDa
Gene Name:	cyclin D binding myb like transcription factor 1
Database Link:	NP_066968 Entrez Gene 114485 RatEntrez Gene 9988 Human Q9Y222
Background:	DMTF1 binds specifically to the nonamer DNA consensus sequences CCCG(G/T)ATGT to activate transcription.
Synonyms:	DMP1; DMTF; hDMP1; MRUL
Note:	Immunogen Sequence Homology: Dog: 100%; Pig: 100%; Rat: 100%; Human: 100%; Mouse: 100%; Bovine: 100%; Rabbit: 100%; Guinea pig: 100%; Horse: 93%



[View online »](#)

Protein Families: Transcription Factors

Product images:



WB Suggested Anti-DMTF1 Antibody Titration:
0.2-1 ug/ml; Positive Control: Transfected 293T