

Product datasheet for **TA345323**

KDM6A Rabbit Polyclonal Antibody

Product data:

Product Type:	Primary Antibodies
Applications:	WB
Recommended Dilution:	WB
Reactivity:	Human
Host:	Rabbit
Isotype:	IgG
Clonality:	Polyclonal
Immunogen:	The immunogen for anti-UTX antibody: synthetic peptide directed towards the middle region of human UTX. Synthetic peptide located within the following region: KTYIVHCQDCARKTSGNLENFVLEQYKMEDLMQVYDQFTLAPPLPSASS
Formulation:	Liquid. Purified antibody supplied in 1x PBS buffer with 0.09% (w/v) sodium azide and 2% sucrose. <i>Note that this product is shipped as lyophilized powder to China customers.</i>
Purification:	Affinity Purified
Conjugation:	Unconjugated
Storage:	Store at -20°C as received.
Stability:	Stable for 12 months from date of receipt.
Predicted Protein Size:	154 kDa
Gene Name:	lysine demethylase 6A
Database Link:	NP_066963 Entrez Gene 7403 Human O15550
Background:	UTX is a histone demethylase that specifically demethylates 'Lys-27' of histone H3, thereby playing a central role in histone code. It demethylates trimethylated and dimethylated but not monomethylated H3 'Lys-27'. UTX plays a central role in regulation of posterior development, by regulating HOX gene expression. Demethylation of 'Lys-27' of histone H3 is concomitant with methylation of 'Lys-4' of histone H3, and regulates the recruitment of the PRC1 complex and monoubiquitination of histone H2A.

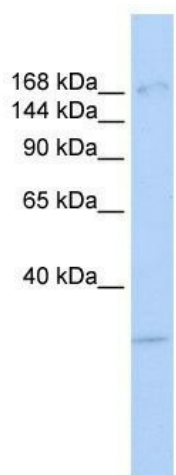


[View online »](#)

Synonyms: bA386N14.2; KABUK2; UTX

Note: Immunogen Sequence Homology: Dog: 100%; Pig: 100%; Rat: 100%; Horse: 100%; Human: 100%; Mouse: 100%; Bovine: 100%; Rabbit: 100%; Guinea pig: 100%; Zebrafish: 86%

Product images:



WB Suggested Anti-UTX Antibody Titration: 0.2-1 ug/ml; ELISA Titer: 1: 312500; Positive Control: MCF7 cell lysate; KDM6A is strongly supported by BioGPS gene expression data to be expressed in Human MCF7 cells