

Product datasheet for **TA345318**

LZTS1 Rabbit Polyclonal Antibody

Product data:

Product Type:	Primary Antibodies
Applications:	WB
Recommended Dilution:	WB
Reactivity:	Human
Host:	Rabbit
Isotype:	IgG
Clonality:	Polyclonal
Immunogen:	The immunogen for anti-LZTS1 antibody: synthetic peptide directed towards the C terminal of human LZTS1. Synthetic peptide located within the following region: QQSYVAMYQRNQRLEKALQQLARGDSAGEPLEVDLEGADIPYEDIATEI
Formulation:	Liquid. Purified antibody supplied in 1x PBS buffer with 0.09% (w/v) sodium azide and 2% sucrose. <i>Note that this product is shipped as lyophilized powder to China customers.</i>
Purification:	Protein A purified
Conjugation:	Unconjugated
Storage:	Store at -20°C as received.
Stability:	Stable for 12 months from date of receipt.
Predicted Protein Size:	67 kDa
Gene Name:	leucine zipper, putative tumor suppressor 1
Database Link:	NP_066300 Entrez Gene 11178 Human Q9Y250
Background:	LZTS1 involved in the regulation of cell growth. LZTS1 may stabilize the active CDC2-cyclin B1 complex and thereby contribute to the regulation of the cell cycle and the prevention of uncontrolled cell proliferation. LZTS1 may act as tumor suppressor and defects in LZTS1 are found in many types of tumors.
Synonyms:	F37; FEZ1

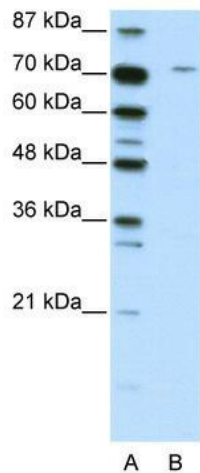


[View online »](#)

Note: Immunogen Sequence Homology: Pig: 100%; Rat: 100%; Horse: 100%; Human: 100%; Mouse: 100%; Bovine: 100%; Guinea pig: 100%; Dog: 93%; Rabbit: 93%

Protein Families: Druggable Genome

Product images:



WB Suggested Anti-LZTS1 Antibody Titration: 2.5 ug/ml; ELISA Titer: 1: 1562500; Positive Control: Jurkat cell lysate