

## Product datasheet for **TA345313**

### NR2F2 Rabbit Polyclonal Antibody

#### Product data:

Product Type:	Primary Antibodies
Applications:	WB
Recommended Dilution:	WB
Reactivity:	Human
Host:	Rabbit
Isotype:	IgG
Clonality:	Polyclonal
Immunogen:	The immunogen for anti-NR2F2 antibody: synthetic peptide directed towards the C terminal of human NR2F2. Synthetic peptide located within the following region: EYSCLKAIVLFTSDACGLSDVAHVESLQEKSQCALEEYVRSQYPNPTRF
Formulation:	Liquid. Purified antibody supplied in 1x PBS buffer with 0.09% (w/v) sodium azide and 2% sucrose. <i>Note that this product is shipped as lyophilized powder to China customers.</i>
Purification:	Protein A purified
Conjugation:	Unconjugated
Storage:	Store at -20°C as received.
Stability:	Stable for 12 months from date of receipt.
Predicted Protein Size:	46 kDa
Gene Name:	nuclear receptor subfamily 2 group F member 2
Database Link:	<a href="#">NP_066285</a> <a href="#">Entrez Gene 7026 Human</a> <a href="#">P24468</a>



[View online »](#)

**Background:**

NR2F2, an orphan member of the nuclear hormone receptor superfamily, acts as a transcriptional repressor by antagonizing the functions of other nuclear hormone receptors and by actively silencing transcription. However, in certain contexts, NR2F2 stimulates transcription directly. NR2F2, MyoD and p300 interact in a competitive manner, and that increasing amounts of NR2F2 have the ability to reduce the interaction between myoD and p300 invitro. NR2F2 post-transcriptionally regulates myoD activity/function, and that crosstalk between orphan nuclear receptors and the myogenic bHLH proteins has functional consequences for differentiation.

**Synonyms:**

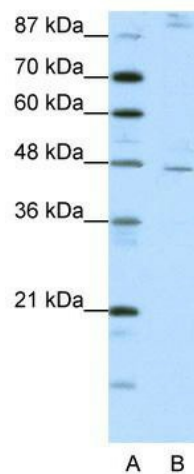
ARP1; CHTD4; COUPTFB; COUPTFII; NF-E3; NR2F1; SVP40; TFCOUP2

**Note:**

Immunogen Sequence Homology: Dog: 100%; Pig: 100%; Rat: 100%; Horse: 100%; Human: 100%; Mouse: 100%; Sheep: 100%; Bovine: 100%; Rabbit: 100%; Zebrafish: 100%; Guinea pig: 100%

**Protein Families:**

Druggable Genome, Nuclear Hormone Receptor, Transcription Factors

**Product images:**

WB Suggested Anti-NR2F2 Antibody Titration:  
1.25 ug/ml; ELISA Titer: 1: 1562500; Positive  
Control: HepG2 cell lysate