

Product datasheet for **TA345312**

NR2F2 Rabbit Polyclonal Antibody

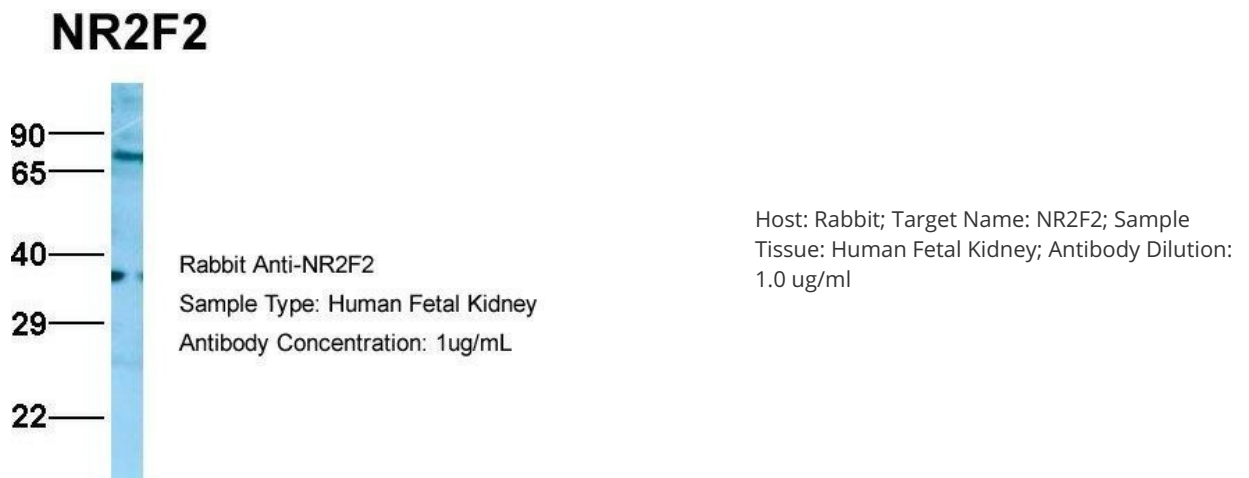
Product data:

| | |
|-------------------------|---|
| Product Type: | Primary Antibodies |
| Applications: | IHC, WB |
| Recommended Dilution: | WB, IHC |
| Reactivity: | Human |
| Host: | Rabbit |
| Isotype: | IgG |
| Clonality: | Polyclonal |
| Immunogen: | The immunogen for anti-NR2F2 antibody: synthetic peptide directed towards the N terminal of human NR2F2. Synthetic peptide located within the following region: QDEVPGSQGSQASQAPPVPGPPPAPHTPQTGQGGPASTPAQTAAGGQG |
| Formulation: | Liquid. Purified antibody supplied in 1x PBS buffer with 0.09% (w/v) sodium azide and 2% sucrose. <i>Note that this product is shipped as lyophilized powder to China customers.</i> |
| Purification: | Protein A purified |
| Conjugation: | Unconjugated |
| Storage: | Store at -20°C as received. |
| Stability: | Stable for 12 months from date of receipt. |
| Predicted Protein Size: | 45 kDa |
| Gene Name: | nuclear receptor subfamily 2 group F member 2 |
| Database Link: | NP_066285 Entrez Gene 7026 Human P24468 |



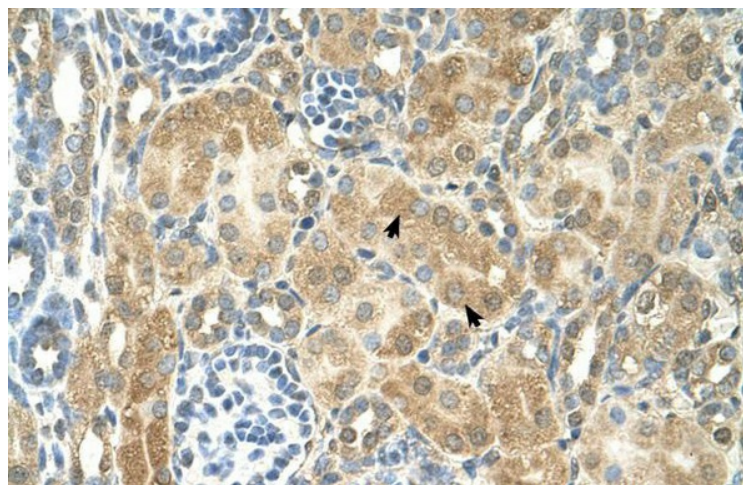
[View online »](#)

- Background:** NR2F2, an orphan member of the nuclear hormone receptor superfamily, acts as a transcriptional repressor by antagonizing the functions of other nuclear hormone receptors and by actively silencing transcription. However, in certain contexts, NR2F2 stimulates transcription directly. NR2F2, MyoD and p300 interact in a competitive manner, and that increasing amounts of NR2F2 have the ability to reduce the interaction between myoD and p300 invitro. NR2F2 post-transcriptionally regulates myoD activity/function, and that crosstalk between orphan nuclear receptors and the myogenic bHLH proteins has functional consequences for differentiation.
- Synonyms:** ARP1; CHTD4; COUPTFB; COUPTFII; NF-E3; NR2F1; SVP40; TFCOUP2
- Note:** Immunogen Sequence Homology: Dog: 100%; Pig: 100%; Rat: 100%; Human: 100%; Mouse: 100%; Bovine: 100%; Guinea pig: 100%; Zebrafish: 79%
- Protein Families:** Druggable Genome, Nuclear Hormone Receptor, Transcription Factors

Product images:



WB Suggested Antibody Titration: 2.5 ug/ml;
Positive Control: MCF7; NR2F2 is strongly supported by BioGPS gene expression data to be expressed in Human MCF7 cells



Human kidney