

Product datasheet for **TA345308**

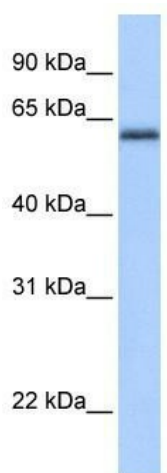
ZBTB26 Rabbit Polyclonal Antibody

Product data:

| | |
|-------------------------|--|
| Product Type: | Primary Antibodies |
| Applications: | WB |
| Recommended Dilution: | WB |
| Reactivity: | Human |
| Host: | Rabbit |
| Isotype: | IgG |
| Clonality: | Polyclonal |
| Immunogen: | The immunogen for anti-ZBTB26 antibody: synthetic peptide directed towards the C terminal of human ZBTB26. Synthetic peptide located within the following region: VFAHKPVLRLKHLKQLHGKNSFDNANERNVQDLTVDFDSFACTTVTDSKGC |
| Formulation: | Liquid. Purified antibody supplied in 1x PBS buffer with 0.09% (w/v) sodium azide and 2% sucrose. <i>Note that this product is shipped as lyophilized powder to China customers.</i> |
| Purification: | Affinity Purified |
| Conjugation: | Unconjugated |
| Storage: | Store at -20°C as received. |
| Stability: | Stable for 12 months from date of receipt. |
| Predicted Protein Size: | 50 kDa |
| Gene Name: | zinc finger and BTB domain containing 26 |
| Database Link: | NP_065975 Entrez Gene 57684 Human Q9HCK0 |
| Background: | ZBTB26 contains 4 C2H2-type zinc fingers. It may be involved in transcriptional regulation. |
| Synonyms: | bioref; ZNF481 |
| Note: | Immunogen Sequence Homology: Pig: 100%; Rat: 100%; Horse: 100%; Human: 100%; Bovine: 100%; Zebrafish: 100%; Mouse: 93% |
| Protein Families: | Transcription Factors |



[View online »](#)

Product images:

WB Suggested Anti-ZBTB26 Antibody Titration:
0.2-1 ug/ml; ELISA Titer: 1: 1562500; Positive
Control: Human heart