

## Product datasheet for **TA345307**

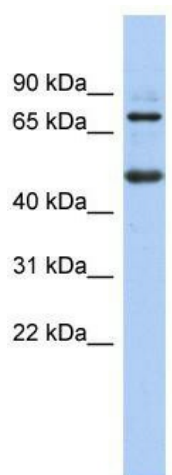
### ZBTB26 Rabbit Polyclonal Antibody

#### Product data:

Product Type:	Primary Antibodies
Applications:	WB
Recommended Dilution:	WB
Reactivity:	Human
Host:	Rabbit
Isotype:	IgG
Clonality:	Polyclonal
Immunogen:	The immunogen for anti-ZBTB26 antibody: synthetic peptide directed towards the N terminal of human ZBTB26. Synthetic peptide located within the following region: MSERDLLHFKFENYGDSMLQKMNKLREENKFCDVTVLIDDIEVQGHKIV
Formulation:	Liquid. Purified antibody supplied in 1x PBS buffer with 0.09% (w/v) sodium azide and 2% sucrose. <i>Note that this product is shipped as lyophilized powder to China customers.</i>
Purification:	Affinity Purified
Conjugation:	Unconjugated
Storage:	Store at -20°C as received.
Stability:	Stable for 12 months from date of receipt.
Predicted Protein Size:	50 kDa
Gene Name:	zinc finger and BTB domain containing 26
Database Link:	<a href="#">NP_065975</a> <a href="#">Entrez Gene 57684 Human</a> <a href="#">Q9HCK0</a>
Background:	ZBTB26 contains 4 C2H2-type zinc fingers. It may be involved in transcriptional regulation.
Synonyms:	bioref; ZNF481
Note:	Immunogen Sequence Homology: Pig: 100%; Rat: 100%; Horse: 100%; Human: 100%; Mouse: 100%; Bovine: 100%; Rabbit: 100%
Protein Families:	Transcription Factors



[View online »](#)

**Product images:**

WB Suggested Anti-ZBTB26 Antibody Titration:  
0.2-1 ug/ml; ELISA Titer: 1: 62500; Positive  
Control: PANC1 cell lysate