

## Product datasheet for **TA345306**

### ZBTB4 Rabbit Polyclonal Antibody

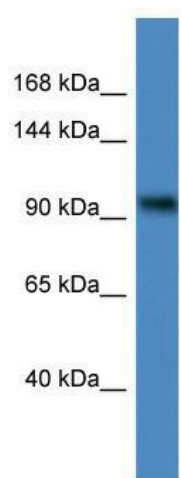
#### Product data:

Product Type:	Primary Antibodies
Applications:	WB
Recommended Dilution:	WB
Reactivity:	Human
Host:	Rabbit
Isotype:	IgG
Clonality:	Polyclonal
Immunogen:	The immunogen for anti-ZBTB4 antibody: synthetic peptide directed towards the C terminal of human ZBTB4. Synthetic peptide located within the following region: PFLPGVFGYAVNPQAAPPAPPTPPPPTLPPPIPPKGEGERAGVERTQKGD
Formulation:	Liquid. Purified antibody supplied in 1x PBS buffer with 0.09% (w/v) sodium azide and 2% sucrose. <i>Note that this product is shipped as lyophilized powder to China customers.</i>
Purification:	Affinity Purified
Conjugation:	Unconjugated
Storage:	Store at -20°C as received.
Stability:	Stable for 12 months from date of receipt.
Predicted Protein Size:	105 kDa
Gene Name:	zinc finger and BTB domain containing 4
Database Link:	<a href="#">NP_065950</a> <a href="#">Entrez Gene 57659 Human Q9P1Z0</a>
Background:	ZBTB4 may be involved in transcriptional regulation.
Synonyms:	KAISO-L1; ZNF903
Note:	Immunogen Sequence Homology: Pig: 100%; Rat: 100%; Horse: 100%; Human: 100%; Bovine: 100%; Rabbit: 100%; Dog: 93%



[View online »](#)

## Product images:



WB Suggested Anti-ZBTB4 Antibody Titration: 0.2-1 ug/ml; ELISA Titer: 1: 12500; Positive Control: 293T cell lysate