

Product datasheet for **TA345303**

KLHL1 Rabbit Polyclonal Antibody

Product data:

Product Type:	Primary Antibodies
Applications:	WB
Recommended Dilution:	WB
Reactivity:	Human
Host:	Rabbit
Isotype:	IgG
Clonality:	Polyclonal
Immunogen:	The immunogen for anti-KLHL1 antibody: synthetic peptide directed towards the middle region of human KLHL1. Synthetic peptide located within the following region: APLSMPRDAVGVCLLGDRLYAVGGYDGQTYLNTMESYDPQTNEWTQMASL
Formulation:	Liquid. Purified antibody supplied in 1x PBS buffer with 0.09% (w/v) sodium azide and 2% sucrose. <i>Note that this product is shipped as lyophilized powder to China customers.</i>
Purification:	Affinity Purified
Conjugation:	Unconjugated
Storage:	Store at -20°C as received.
Stability:	Stable for 12 months from date of receipt.
Predicted Protein Size:	83 kDa
Gene Name:	kelch like family member 1
Database Link:	NP_065917 Entrez Gene 57626 Human Q9NR64
Background:	KLHL1 contains 6 Kelch repeats and 1 BTB (POZ) domain..It is highly expressed in brain. KLHL1 may play a role in organizing the actin cytoskeleton of the brain cells.
Synonyms:	MRP2
Note:	Immunogen Sequence Homology: Dog: 100%; Pig: 100%; Horse: 100%; Human: 100%; Mouse: 100%; Bovine: 100%; Rabbit: 100%; Guinea pig: 100%; Zebrafish: 90%; Rat: 79%



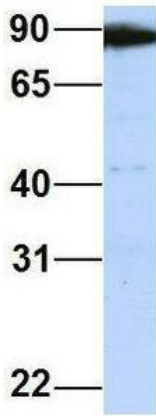
[View online »](#)

Product images:



WB Suggested Anti-KLHL1 Antibody Titration: 0.2-1 ug/ml; ELISA Titer: 1: 62500; Positive Control: 293T cell lysate; KLHL1 is supported by BioGPS gene expression data to be expressed in HEK293T

KLHL1



Rabbit Anti-KLHL1
 Sample Type: Human 721_B
 Antibody Concentration: 1ug/mL

Host: Rabbit; Target Name: KLHL1; Sample Tissue: Human 721_B; Antibody Dilution: 1.0 ug/ml; KLHL1 is supported by BioGPS gene expression data to be expressed in 721_B