

## Product datasheet for **TA345302**

### ZBTB2 Rabbit Polyclonal Antibody

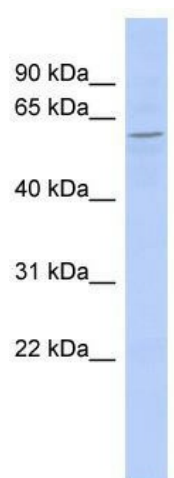
#### Product data:

Product Type:	Primary Antibodies
Applications:	WB
Recommended Dilution:	WB
Reactivity:	Human
Host:	Rabbit
Isotype:	IgG
Clonality:	Polyclonal
Immunogen:	The immunogen for anti-ZBTB2 antibody: synthetic peptide directed towards the middle region of human ZBTB2. Synthetic peptide located within the following region: VKHSCQNQNSDVFALDEGRSILLGSGDSEVTEPDHPVLASIKKEQETVLL
Formulation:	Liquid. Purified antibody supplied in 1x PBS buffer with 0.09% (w/v) sodium azide and 2% sucrose. <i>Note that this product is shipped as lyophilized powder to China customers.</i>
Purification:	Affinity Purified
Conjugation:	Unconjugated
Storage:	Store at -20°C as received.
Stability:	Stable for 12 months from date of receipt.
Predicted Protein Size:	57 kDa
Gene Name:	zinc finger and BTB domain containing 2
Database Link:	<a href="#">NP_065912</a> <a href="#">Entrez Gene 57621 Human</a> <a href="#">Q8N680</a>
Background:	ZBTB2 may be involved in transcriptional regulation.
Synonyms:	ZNF437
Note:	Immunogen Sequence Homology: Dog: 100%; Pig: 100%; Rat: 100%; Human: 100%; Rabbit: 100%; Horse: 93%; Mouse: 93%; Bovine: 93%; Guinea pig: 93%
Protein Families:	Transcription Factors



[View online »](#)

## Product images:



WB Suggested Anti-ZBTB2 Antibody Titration: 0.2-1 ug/ml; ELISA Titer: 1: 312500; Positive Control: NCI-H226 cell lysate