

## Product datasheet for **TA345300**

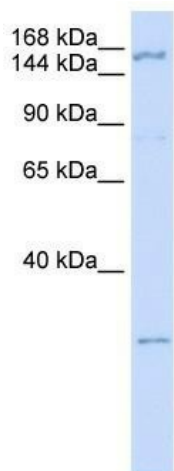
### ZNF687 Rabbit Polyclonal Antibody

#### Product data:

Product Type:	Primary Antibodies
Applications:	WB
Recommended Dilution:	WB
Reactivity:	Human
Host:	Rabbit
Isotype:	IgG
Clonality:	Polyclonal
Immunogen:	The immunogen for anti-ZNF687 antibody: synthetic peptide directed towards the C terminal of human ZNF687. Synthetic peptide located within the following region: DSPLPASGGPLTCKVCGKSCDSPLNLKTHFRTHGMAFIRARQGAVGDN
Formulation:	Liquid. Purified antibody supplied in 1x PBS buffer with 0.09% (w/v) sodium azide and 2% sucrose.
Purification:	Affinity Purified
Conjugation:	Unconjugated
Storage:	Store at -20°C as received.
Stability:	Stable for 12 months from date of receipt.
Predicted Protein Size:	129 kDa
Gene Name:	zinc finger protein 687
Database Link:	<a href="#">NP_065883</a> <a href="#">Entrez Gene 57592 Human</a> <a href="#">Q8N1G0</a>
Background:	ZNF687 belongs to the krueppel C2H2-type zinc-finger protein family and may be involved in transcriptional regulation.
Synonyms:	PDB6
Note:	Immunogen Sequence Homology: Dog: 100%; Pig: 100%; Rat: 100%; Horse: 100%; Human: 100%; Mouse: 100%; Bovine: 100%; Rabbit: 100%; Guinea pig: 100%



[View online »](#)

**Product images:**

WB Suggested Anti-ZNF687 Antibody Titration:  
0.2-1 ug/ml; ELISA Titer: 1: 12500; Positive  
Control: 293T cell lysate