

Product datasheet for **TA345299**

ZFP28 Rabbit Polyclonal Antibody

Product data:

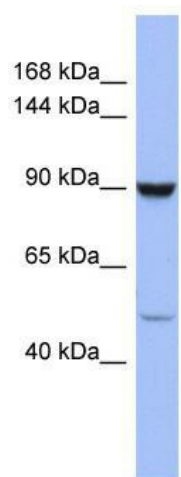
Product Type:	Primary Antibodies
Applications:	WB
Recommended Dilution:	WB
Reactivity:	Human
Host:	Rabbit
Isotype:	IgG
Clonality:	Polyclonal
Immunogen:	The immunogen for anti-ZFP28 antibody: synthetic peptide directed towards the middle region of human ZFP28. Synthetic peptide located within the following region: RKTFIQIGHLNQHKRVHTGERSYNYKSRKVFRQTAHLAHHQRIHTGESS
Formulation:	Liquid. Purified antibody supplied in 1x PBS buffer with 0.09% (w/v) sodium azide and 2% sucrose. <i>Note that this product is shipped as lyophilized powder to China customers.</i>
Purification:	Affinity Purified
Conjugation:	Unconjugated
Storage:	Store at -20°C as received.
Stability:	Stable for 12 months from date of receipt.
Predicted Protein Size:	99 kDa
Gene Name:	ZFP28 zinc finger protein
Database Link:	NP_065879 Entrez Gene 140612 Human Q8NHY6
Background:	ZFP28 may be involved in transcriptional regulation. ZFP28 may also have a role in embryonic development.
Synonyms:	mkr5
Note:	Immunogen Sequence Homology: Dog: 100%; Human: 100%; Bovine: 100%; Rabbit: 100%; Pig: 92%; Rat: 92%; Horse: 92%; Mouse: 92%; Guinea pig: 92%



[View online »](#)

Protein Families: Transcription Factors

Product images:



WB Suggested Anti-ZFP28 Antibody Titration: 0.2-1 ug/ml; ELISA Titer: 1: 312500; Positive Control: COLO205 cell lysate