

Product datasheet for **TA345298**

ZNF471 Rabbit Polyclonal Antibody

Product data:

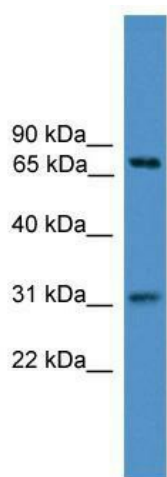
Product Type:	Primary Antibodies
Applications:	WB
Recommended Dilution:	WB
Reactivity:	Human
Host:	Rabbit
Isotype:	IgG
Clonality:	Polyclonal
Immunogen:	The immunogen for anti-ZNF471 antibody: synthetic peptide directed towards the N terminal of human ZNF471. Synthetic peptide located within the following region: MNVEVVKVMPQDLVTFKDV AIDFSQEEWQWMNPAQKRLYRSMML ENYQSL
Formulation:	Liquid. Purified antibody supplied in 1x PBS buffer with 0.09% (w/v) sodium azide and 2% sucrose. <i>Note that this product is shipped as lyophilized powder to China customers.</i>
Purification:	Affinity Purified
Conjugation:	Unconjugated
Storage:	Store at -20°C as received.
Stability:	Stable for 12 months from date of receipt.
Predicted Protein Size:	73 kDa
Gene Name:	zinc finger protein 471
Database Link:	NP_065864 Entrez Gene 57573 Human Q9BX82
Background:	ZNF471 belongs to the krueppel C2H2-type zinc-finger protein family. It contains 15 C2H2-type zinc fingers and 1 KRAB domain. ZNF471 may be involved in transcriptional regulation.
Synonyms:	ERP1; Z1971
Note:	Immunogen Sequence Homology: Human: 100%; Horse: 92%; Pig: 83%; Rat: 83%; Bovine: 83%; Dog: 82%; Mouse: 75%; Rabbit: 75%



[View online »](#)

Protein Families: Transcription Factors

Product images:



WB Suggested Anti-ZNF471 Antibody Titration:
0.2-1 ug/ml; ELISA Titer: 1: 312500; Positive
Control: 721_B cell lysate; ZNF471 is supported by
BioGPS gene expression data to be expressed in
721_B