

Product datasheet for **TA345297**

KLHL8 Rabbit Polyclonal Antibody

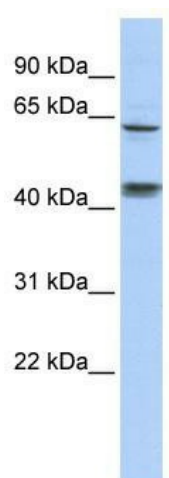
Product data:

Product Type:	Primary Antibodies
Applications:	WB
Recommended Dilution:	WB
Reactivity:	Human
Host:	Rabbit
Isotype:	IgG
Clonality:	Polyclonal
Immunogen:	The immunogen for anti-KLHL8 antibody: synthetic peptide directed towards the middle region of human KLHL8. Synthetic peptide located within the following region: TVEAFDPVLNRWELVGSVSHCRAGAGVAVCSCLTSQIRDVGHGSNNVDC
Formulation:	Liquid. Purified antibody supplied in 1x PBS buffer with 0.09% (w/v) sodium azide and 2% sucrose. <i>Note that this product is shipped as lyophilized powder to China customers.</i>
Purification:	Affinity Purified
Conjugation:	Unconjugated
Storage:	Store at -20°C as received.
Stability:	Stable for 12 months from date of receipt.
Predicted Protein Size:	69 kDa
Gene Name:	kelch like family member 8
Database Link:	NP_065854 Entrez Gene 57563 Human Q9P2G9
Background:	The specific function of KLHL8 is not yet known.
Synonyms:	FLJ46304; KIAA1378
Note:	Immunogen Sequence Homology: Dog: 100%; Horse: 100%; Human: 100%; Mouse: 100%; Rat: 93%; Bovine: 93%; Rabbit: 93%; Pig: 86%; Guinea pig: 86%; Zebrafish: 77%



[View online »](#)

Product images:



WB Suggested Anti-KLHL8 Antibody Titration: 0.2-1 ug/ml; ELISA Titer: 1: 312500; Positive Control: 721_B cell lysate