

Product datasheet for **TA345293**

p66 beta (GATAD2B) Rabbit Polyclonal Antibody

Product data:

Product Type:	Primary Antibodies
Applications:	WB
Recommended Dilution:	WB
Reactivity:	Human
Host:	Rabbit
Isotype:	IgG
Clonality:	Polyclonal
Immunogen:	The immunogen for anti-GATAD2B antibody: synthetic peptide directed towards the N terminal of human GATAD2B. Synthetic peptide located within the following region: MDRMTEDALRLNLLKRS LDPADERDDVLAKRLKMEGHEAMERLKM LALLK
Formulation:	Liquid. Purified antibody supplied in 1x PBS buffer with 0.09% (w/v) sodium azide and 2% sucrose. <i>Note that this product is shipped as lyophilized powder to China customers.</i>
Purification:	Affinity Purified
Conjugation:	Unconjugated
Storage:	Store at -20°C as received.
Stability:	Stable for 12 months from date of receipt.
Predicted Protein Size:	65 kDa
Gene Name:	GATA zinc finger domain containing 2B
Database Link:	NP_065750 Entrez Gene 57459 Human Q8WXI9



[View online »](#)

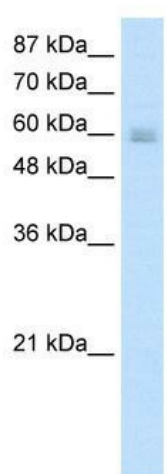
Background: Hp66beta (GATAD2B), previously identified as a component of the human MeCP1 complex, is a second member of a p66 gene family (hp66alpha and hp66beta). Both proteins interact with MBD2 and MBD3 functionally and biochemically. Both factors function in synergy, since knocking-down p66alpha affects the repressive function of p66beta and vice versa. Furthermore, confocal microscopy shows a nuclear colocalization of hp66alpha with hp66beta and MBD2 in a speckled pattern. These two highly related mammalian p66 proteins display overlapping functions and are involved in methylation dependent transcriptional repression.

Synonyms: MRD18; P66beta; p68

Note: Immunogen Sequence Homology: Dog: 100%; Pig: 100%; Rat: 100%; Horse: 100%; Human: 100%; Mouse: 100%; Bovine: 100%; Rabbit: 100%; Guinea pig: 100%; Zebrafish: 93%

Protein Families: Transcription Factors

Product images:



WB Suggested Anti-GATAD2B Antibody Titration:
0.2-1 ug/ml; ELISA Titer: 1: 312500; Positive
Control: HepG2 cell lysate