

## Product datasheet for **TA345288**

### Achaete scute homolog 3 (ASCL3) Rabbit Polyclonal Antibody

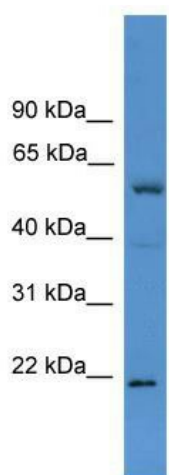
#### Product data:

Product Type:	Primary Antibodies
Applications:	WB
Recommended Dilution:	WB
Reactivity:	Human
Host:	Rabbit
Isotype:	IgG
Clonality:	Polyclonal
Immunogen:	The immunogen for anti-ASCL3 antibody: synthetic peptide directed towards the C terminal of human ASCL3. Synthetic peptide located within the following region: PEEYLEKRLSKVETLRAAIKYINYLQSLLYPDKAETKNNPGKVSSMIATT
Formulation:	Liquid. Purified antibody supplied in 1x PBS buffer with 0.09% (w/v) sodium azide and 2% sucrose. <i>Note that this product is shipped as lyophilized powder to China customers.</i>
Purification:	Affinity Purified
Conjugation:	Unconjugated
Storage:	Store at -20°C as received.
Stability:	Stable for 12 months from date of receipt.
Predicted Protein Size:	21 kDa
Gene Name:	achaete-scute family bHLH transcription factor 3
Database Link:	<a href="#">NP_065697</a> <a href="#">Entrez Gene 56676 Human</a> <a href="#">Q9NQ33</a>
Background:	Basic helix-loop-helix transcription factors, such as ASCL3, are essential for the determination of cell fate and the development and differentiation of numerous tissues (Jonsson et al., 2004 [PubMed 15475265]).
Synonyms:	bHLHa42; HASH3; SGN1
Note:	Immunogen Sequence Homology: Dog: 100%; Pig: 100%; Rat: 100%; Horse: 100%; Human: 100%; Bovine: 100%; Rabbit: 100%; Guinea pig: 100%; Mouse: 93%



[View online »](#)

## Product images:



WB Suggested Anti-ASCL3 Antibody Titration: 0.2-1 ug/ml; ELISA Titer: 1: 1562500; Positive Control: MCF7 cell lysate