

Product datasheet for **TA345286**

Zinc finger MIZ domain containing protein 1 (ZMIZ1) Rabbit Polyclonal Antibody

Product data:

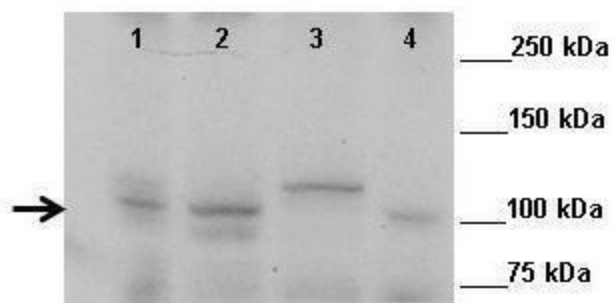
Product Type:	Primary Antibodies
Applications:	WB
Recommended Dilution:	WB
Reactivity:	Human, Mouse
Host:	Rabbit
Isotype:	IgG
Clonality:	Polyclonal
Immunogen:	The immunogen for anti-ZMIZ1 antibody: synthetic peptide directed towards the N terminal of human ZMIZ1. Synthetic peptide located within the following region: MNSMDRHIQQTNDRLQCIKQHLQNPANFHNAATELLDWCGDPRAFQRPFE
Formulation:	Liquid. Purified antibody supplied in 1x PBS buffer with 0.09% (w/v) sodium azide and 2% sucrose. <i>Note that this product is shipped as lyophilized powder to China customers.</i>
Purification:	Affinity Purified
Conjugation:	Unconjugated
Storage:	Store at -20°C as received.
Stability:	Stable for 12 months from date of receipt.
Predicted Protein Size:	115 kDa
Gene Name:	zinc finger MIZ-type containing 1
Database Link:	NP_065071 Entrez Gene 328365 Mouse Entrez Gene 57178 Human Q9ULJ6
Background:	ZMIZ1 increases ligand-dependent transcriptional activity of AR and promotes AR sumoylation. The stimulation of AR activity is dependent upon sumoylation.
Synonyms:	hZIMP10; MIZ; RAI17; TRAFIP10; ZIMP10
Note:	Immunogen Sequence Homology: Dog: 100%; Pig: 100%; Rat: 100%; Horse: 100%; Human: 100%; Mouse: 100%; Bovine: 100%; Rabbit: 100%; Guinea pig: 100%; Zebrafish: 82%



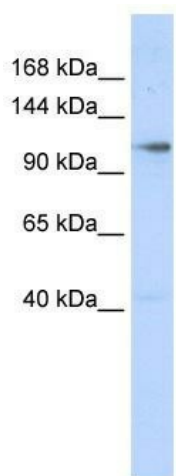
[View online »](#)

Product images:

ZMIZ1



Lanes: Lane 1: 50ug mouse retina extract; Lane 2: 50ug mouse prostate extract; Lane 3: 50ug mouse testis extract; Lane 4: 50ug mouse colon extract; Primary Antibody Dilution: 1: 1000; Secondary Antibody: Anti-rabbit HRP; Secondary Antibody Dilution: 1: 10,000; Gene Name: ZMIZ1; Submitted by: John Fu, UVA;



WB Suggested Anti-ZMIZ1 Antibody Titration: 0.2-1 ug/ml; ELISA Titer: 1: 12500; Positive Control: 293T cell lysate