

## Product datasheet for **TA345284**

### TULP4 Rabbit Polyclonal Antibody

#### Product data:

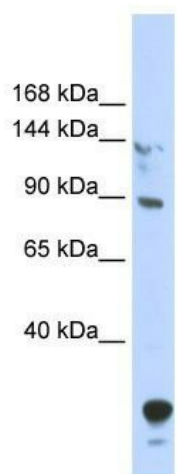
Product Type:	Primary Antibodies
Applications:	WB
Recommended Dilution:	WB
Reactivity:	Human
Host:	Rabbit
Isotype:	IgG
Clonality:	Polyclonal
Immunogen:	The immunogen for anti-TULP4 antibody: synthetic peptide directed towards the N terminal of human TULP4. Synthetic peptide located within the following region: MYAAVEHGVPVLCSDSNILCLSWKGRVPKSEKEKPVCRRRYEEGWLATGN
Formulation:	Liquid. Purified antibody supplied in 1x PBS buffer with 0.09% (w/v) sodium azide and 2% sucrose. <i>Note that this product is shipped as lyophilized powder to China customers.</i>
Purification:	Affinity Purified
Conjugation:	Unconjugated
Storage:	Store at -20°C as received.
Stability:	Stable for 12 months from date of receipt.
Predicted Protein Size:	76 kDa
Gene Name:	tubby like protein 4
Database Link:	<a href="#">NP_001007467</a> <a href="#">Entrez Gene 56995 Human</a> <a href="#">Q9NRJ4</a>
Background:	TULP4 may be a substrate-recognition component of a SCF-like ECS (Elongin-Cullin-SOCS-box protein) E3 ubiquitin ligase complex which mediates the ubiquitination and subsequent proteasomal degradation of target proteins.
Synonyms:	TUSP
Note:	Immunogen Sequence Homology: Dog: 100%; Pig: 100%; Rat: 100%; Horse: 100%; Human: 100%; Mouse: 100%; Bovine: 100%; Rabbit: 100%; Zebrafish: 100%; Guinea pig: 100%



[View online »](#)

Protein Families: Druggable Genome, Transcription Factors

### Product images:



WB Suggested Anti-TULP4 Antibody Titration: 0.2-1 ug/ml; ELISA Titer: 1: 312500; Positive Control: 293T cell lysate