

Product datasheet for **TA345283**

BBX Rabbit Polyclonal Antibody

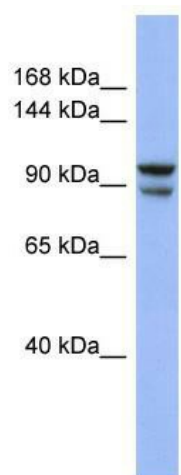
Product data:

Product Type:	Primary Antibodies
Applications:	WB
Recommended Dilution:	WB
Reactivity:	Human
Host:	Rabbit
Isotype:	IgG
Clonality:	Polyclonal
Immunogen:	The immunogen for anti-BBX antibody: synthetic peptide directed towards the middle region of human BBX. Synthetic peptide located within the following region: VSAFFSLAALAEVAAMENVHRGQRSTPLTHDGQPKEMPQAPVLISCADQ
Formulation:	Liquid. Purified antibody supplied in 1x PBS buffer with 0.09% (w/v) sodium azide and 2% sucrose.
Purification:	Affinity Purified
Conjugation:	Unconjugated
Storage:	Store at -20°C as received.
Stability:	Stable for 12 months from date of receipt.
Predicted Protein Size:	101 kDa
Gene Name:	bobby sox homolog (Drosophila)
Database Link:	NP_064620 Entrez Gene 56987 Human Q8WY36
Background:	BBX is a transcription factor that is necessary for cell cycle progression from G1 to S phase.
Synonyms:	ARTC1; HBP2; HSPC339; MDS001
Note:	Immunogen Sequence Homology: Dog: 100%; Pig: 100%; Rat: 100%; Horse: 100%; Human: 100%; Mouse: 100%; Bovine: 100%; Rabbit: 100%; Guinea pig: 100%
Protein Families:	Transcription Factors



[View online »](#)

Product images:



WB Suggested Anti-BBX Antibody Titration: 0.2-1 ug/ml; ELISA Titer: 1: 312500; Positive Control: COLO205 cell lysate