

Product datasheet for **TA345280**

PRDM8 Rabbit Polyclonal Antibody

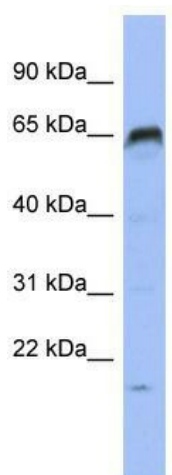
Product data:

Product Type:	Primary Antibodies
Applications:	WB
Recommended Dilution:	WB
Reactivity:	Human
Host:	Rabbit
Isotype:	IgG
Clonality:	Polyclonal
Immunogen:	The immunogen for anti-PRDM8 antibody: synthetic peptide directed towards the N terminal of human PRDM8. Synthetic peptide located within the following region: MEDTGIQRGIWDGDAKAVQQCLTDIFTSVYTTCDIPENAIFGPCVLSHTS
Formulation:	Liquid. Purified antibody supplied in 1x PBS buffer with 0.09% (w/v) sodium azide and 2% sucrose. <i>Note that this product is shipped as lyophilized powder to China customers.</i>
Purification:	Affinity Purified
Conjugation:	Unconjugated
Storage:	Store at -20°C as received.
Stability:	Stable for 12 months from date of receipt.
Predicted Protein Size:	72 kDa
Gene Name:	PR domain 8
Database Link:	NP_064611 Entrez Gene 56978 Human Q9NQV8
Background:	PRDM8 may be involved in transcriptional regulation.
Synonyms:	PFM5
Note:	Immunogen Sequence Homology: Human: 100%; Dog: 93%; Pig: 93%; Mouse: 93%; Guinea pig: 93%; Rat: 86%; Horse: 86%; Bovine: 86%; Rabbit: 86%
Protein Families:	Druggable Genome, Transcription Factors



[View online »](#)

Product images:



WB Suggested Anti-PRDM8 Antibody Titration:
0.2-1 ug/ml; ELISA Titer: 1: 312500; Positive
Control: HT1080 cell lysate