

Product datasheet for **TA345278**

ARNTL2 Rabbit Polyclonal Antibody

Product data:

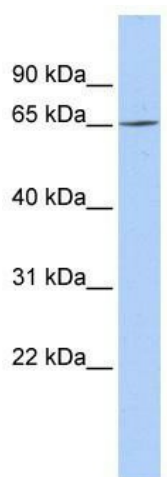
Product Type:	Primary Antibodies
Applications:	WB
Recommended Dilution:	IHC, WB
Reactivity:	Human
Host:	Rabbit
Isotype:	IgG
Clonality:	Polyclonal
Immunogen:	The immunogen for anti-ARNTL2 antibody: synthetic peptide directed towards the N terminal of human ARNTL2. Synthetic peptide located within the following region: PTAMGSFSSHMTFPRKRKGS DSDPSQSGIMTEKVEKLSQNPLTYLLST
Formulation:	Liquid. Purified antibody supplied in 1x PBS buffer with 0.09% (w/v) sodium azide and 2% sucrose. <i>Note that this product is shipped as lyophilized powder to China customers.</i>
Purification:	Affinity Purified
Conjugation:	Unconjugated
Storage:	Store at -20°C as received.
Stability:	Stable for 12 months from date of receipt.
Predicted Protein Size:	71 kDa
Gene Name:	aryl hydrocarbon receptor nuclear translocator like 2
Database Link:	NP_064568 Entrez Gene 56938 Human Q8WYA1
Background:	ARNTL2-CLOCK heterodimers activate E-box element (3'-CACGTG-5') transcription. Also, in umbilical vein endothelial cells, ARNTL2 activates SERPINE1 through E-box sites. This transactivation is inhibited by PER2 and CRY1.
Synonyms:	bHLHe6; BMAL2; CLIF; MOP9; PASD9
Note:	Immunogen Sequence Homology: Human: 100%; Dog: 86%; Mouse: 77%



[View online »](#)

Protein Families: Druggable Genome, Transcription Factors

Product images:



WB Suggested Anti-ARNTL2 Antibody Titration:
0.2-1 ug/ml; ELISA Titer: 1: 1562500; Positive
Control: MCF7 cell lysate