

## Product datasheet for **TA345277**

### PCMF (KCMF1) Rabbit Polyclonal Antibody

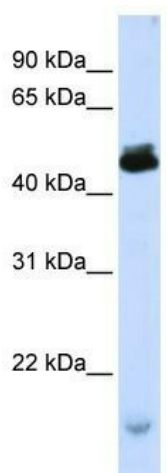
#### Product data:

Product Type:	Primary Antibodies
Applications:	WB
Recommended Dilution:	WB
Reactivity:	Human
Host:	Rabbit
Isotype:	IgG
Clonality:	Polyclonal
Immunogen:	The immunogen for anti-KCMF1 antibody: synthetic peptide directed towards the C terminal of human KCMF1. Synthetic peptide located within the following region: STLVREESSSSDEDDRGMADFGAMGCVDIMPLDVALENLNLKESNKGNE
Formulation:	Liquid. Purified antibody supplied in 1x PBS buffer with 0.09% (w/v) sodium azide and 2% sucrose.
Purification:	Affinity Purified
Conjugation:	Unconjugated
Storage:	Store at -20°C as received.
Stability:	Stable for 12 months from date of receipt.
Predicted Protein Size:	42 kDa
Gene Name:	potassium channel modulatory factor 1
Database Link:	<a href="#">NP_064507</a> <a href="#">Entrez Gene 56888 Human</a> <a href="#">Q9P0J7</a>
Background:	KCMF1 belongs to the KCMF1 family. It contains 1 C2H2-type zinc finger and 1 ZZ-type zinc finger. It has intrinsic E3 ubiquitin ligase activity and promotes ubiquitination.
Synonyms:	DEBT91; FIGC; PCMF; ZZZ1
Note:	Immunogen Sequence Homology: Dog: 100%; Pig: 100%; Rat: 100%; Horse: 100%; Human: 100%; Mouse: 100%; Bovine: 100%; Rabbit: 100%; Guinea pig: 100%; Zebrafish: 92%



[View online »](#)

## Product images:



WB Suggested Anti-KCMF1 Antibody Titration:  
0.2-1 ug/ml; ELISA Titer: 1: 62500; Positive  
Control: Transfected 293T