

Product datasheet for **TA345276**

SLC2A4RG Rabbit Polyclonal Antibody

Product data:

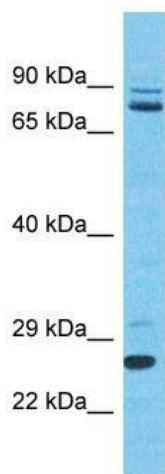
Product Type:	Primary Antibodies
Applications:	WB
Recommended Dilution:	WB
Reactivity:	Human
Host:	Rabbit
Isotype:	IgG
Clonality:	Polyclonal
Immunogen:	The immunogen for Anti-SLC2A4RG antibody is: synthetic peptide directed towards the C-terminal region of Human SLC2A4RG. Synthetic peptide located within the following region: HSDRVYQGCLTPARLEPQPTEVGACPPALSSRIGVTLRKPRGDAKKCRKV
Formulation:	Liquid. Purified antibody supplied in 1x PBS buffer with 0.09% (w/v) sodium azide and 2% sucrose. <i>Note that this product is shipped as lyophilized powder to China customers.</i>
Purification:	Affinity Purified
Conjugation:	Unconjugated
Storage:	Store at -20°C as received.
Stability:	Stable for 12 months from date of receipt.
Predicted Protein Size:	29 kDa
Gene Name:	SLC2A4 regulator
Database Link:	NP_064446 Entrez Gene 56731 Human Q9NR83
Background:	The protein encoded by SLC2A4RG is a nuclear transcription factor involved in the activation of the solute carrier family 2 member 4 gene. The encoded protein interacts with another transcription factor, myocyte enhancer factor 2, to activate transcription of this gene.
Synonyms:	GEF; HDBP-1; HDBP1; Si-1-2; Si-1-2-19
Note:	Immunogen Sequence Homology: Human: 100%; Rat: 85%; Mouse: 83%



[View online »](#)

Protein Families: Transcription Factors

Product images:



Host: Rabbit

Target Name: SLC2A4RG

Sample Tissue: Thymus Tumor Lysate

Antibody Dilution: 1.0 μ g/ml

Host: Rabbit; Target Name: SLC2A4RG; Sample Tissue: Thymus Tumor lysates; Antibody Dilution: 1.0 ug/ml