

Product datasheet for **TA345274**

POLE4 Rabbit Polyclonal Antibody

Product data:

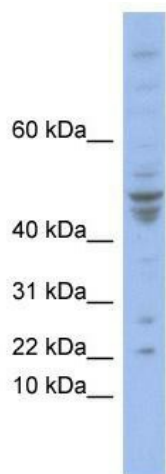
Product Type:	Primary Antibodies
Applications:	WB
Recommended Dilution:	WB
Reactivity:	Human
Host:	Rabbit
Isotype:	IgG
Clonality:	Polyclonal
Immunogen:	The immunogen for anti-POLE4 antibody: synthetic peptide directed towards the N terminal of human POLE4. Synthetic peptide located within the following region: MAAAAAAGSGTPREEEGPAGEAAASQPQAPTSVPGARLSRLPLARVKALV
Formulation:	Liquid. Purified antibody supplied in 1x PBS buffer with 0.09% (w/v) sodium azide and 2% sucrose. <i>Note that this product is shipped as lyophilized powder to China customers.</i>
Purification:	Affinity Purified
Conjugation:	Unconjugated
Storage:	Store at -20°C as received.
Stability:	Stable for 12 months from date of receipt.
Predicted Protein Size:	12 kDa
Gene Name:	polymerase (DNA) epsilon 4, accessory subunit
Database Link:	NP_063949 Entrez Gene 56655 Human Q9NR33
Background:	POLE4 is a histone-fold protein that interacts with other histone-fold proteins to bind DNA in a sequence-independent manner. These histone-fold protein dimers combine within larger enzymatic complexes for DNA transcription, replication, and packaging.
Synonyms:	p12; YHHQ1
Note:	Immunogen Sequence Homology: Human: 100%; Dog: 93%; Pig: 93%; Guinea pig: 93%; Horse: 86%; Bovine: 86%; Rat: 79%



[View online »](#)

Protein Pathways: Base excision repair, DNA replication, Metabolic pathways, Nucleotide excision repair, Purine metabolism, Pyrimidine metabolism

Product images:



WB Suggested Anti-POLE4 Antibody Titration: 0.2-1 ug/ml; ELISA Titer: 1: 312500; Positive Control: COLO205 cell lysate