

Product datasheet for **TA345272**

METTL3 Rabbit Polyclonal Antibody

Product data:

Product Type:	Primary Antibodies
Applications:	IHC, WB
Recommended Dilution:	WB, IHC
Reactivity:	Human
Host:	Rabbit
Isotype:	IgG
Clonality:	Polyclonal
Immunogen:	The immunogen for anti-METTL3 antibody: synthetic peptide directed towards the N terminal of human METTL3. Synthetic peptide located within the following region: MSDTWSSIQAHHKQLDSLRLQRRRKQDSGHLDLRNPEAALSPTFRSDS
Formulation:	Liquid. Purified antibody supplied in 1x PBS buffer with 0.09% (w/v) sodium azide and 2% sucrose. <i>Note that this product is shipped as lyophilized powder to China customers.</i>
Purification:	Protein A purified
Conjugation:	Unconjugated
Storage:	Store at -20°C as received.
Stability:	Stable for 12 months from date of receipt.
Predicted Protein Size:	64 kDa
Gene Name:	methyltransferase like 3
Database Link:	NP_062826 Entrez Gene 56339 Human Q86U44
Background:	METTL3 is the 70 kDa subunit of MT-A which is part of N6-adenosine-methyltransferase. This enzyme is involved in the posttranscriptional methylation of internal adenosine residues in eukaryotic mRNAs, forming N6-methyladenosine. This gene encodes the 70 kDa subunit of MT-A which is part of N6-adenosine-methyltransferase. This enzyme is involved in the posttranscriptional methylation of internal adenosine residues in eukaryotic mRNAs, forming N6-methyladenosine.



[View online »](#)

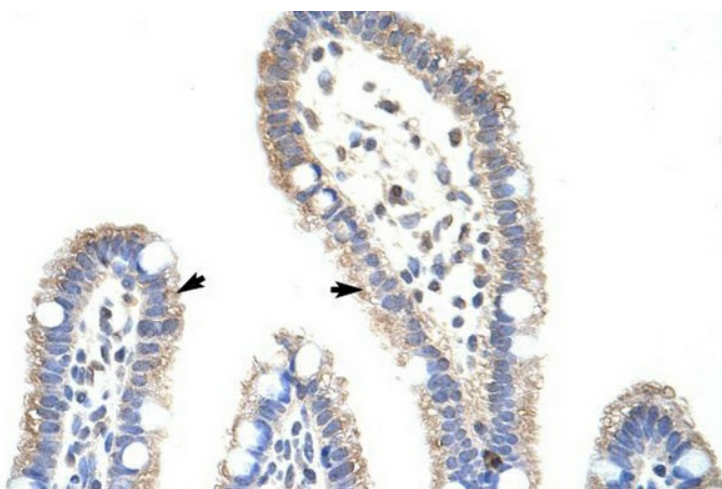
Synonyms: IME4; M6A; MT-A70; Spo8

Note: Immunogen Sequence Homology: Dog: 100%; Pig: 100%; Rat: 100%; Horse: 100%; Human: 100%; Mouse: 100%; Bovine: 100%; Rabbit: 100%; Zebrafish: 100%; Guinea pig: 100%; Goat: 85%

Product images:



WB Suggested Anti-METTL3 Antibody Titration: 5.0 ug/ml; ELISA Titer: 1: 312500; Positive Control: Human Thymus



Human Intestine