

Product datasheet for **TA345271**

Wdr45b Rabbit Polyclonal Antibody

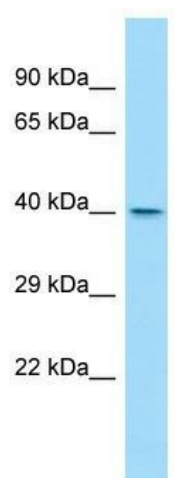
Product data:

Product Type:	Primary Antibodies
Applications:	WB
Recommended Dilution:	WB
Reactivity:	Rat
Host:	Rabbit
Isotype:	IgG
Clonality:	Polyclonal
Immunogen:	The immunogen for Anti-Wdr45l antibody is: synthetic peptide directed towards the C-terminal region of Rat Wdr45l. Synthetic peptide located within the following region: SPCICAFGTEPNAVIAICADGSYYKFLFSPKGECVRDVCAQFLEMTDDKL
Formulation:	Liquid. Purified antibody supplied in 1x PBS buffer with 0.09% (w/v) sodium azide and 2% sucrose.
Purification:	Affinity Purified
Conjugation:	Unconjugated
Storage:	Store at -20°C as received.
Stability:	Stable for 12 months from date of receipt.
Predicted Protein Size:	37 kDa
Gene Name:	WD repeat domain 45B
Database Link:	NP_001034676 Entrez Gene 360682 Rat
Background:	The function of this protein remains unknown.
Synonyms:	WDR45L; WIPI-3; WIPI3
Note:	Immunogen Sequence Homology: Dog: 100%; Pig: 100%; Rat: 100%; Horse: 100%; Human: 100%; Bovine: 100%; Rabbit: 100%; Guinea pig: 100%; Mouse: 93%; Zebrafish: 93%



[View online »](#)

Product images:



Host: Rabbit; Target Name: Wdr45l; Sample
Tissue: Rat Spleen lysates; Antibody Dilution: 1.0
ug/ml