

Product datasheet for **TA345270**

KLHL4 Rabbit Polyclonal Antibody

Product data:

Product Type:	Primary Antibodies
Applications:	WB
Recommended Dilution:	WB
Reactivity:	Human
Host:	Rabbit
Isotype:	IgG
Clonality:	Polyclonal
Immunogen:	The immunogen for anti-KLHL4 antibody: synthetic peptide directed towards the N terminal of human KLHL4. Synthetic peptide located within the following region: CLQEGEYHRGTPVQGRLKSHSRDRNGLKKSNSPVHHNILAPVPGPAPAH
Formulation:	Liquid. Purified antibody supplied in 1x PBS buffer with 0.09% (w/v) sodium azide and 2% sucrose. <i>Note that this product is shipped as lyophilized powder to China customers.</i>
Purification:	Affinity Purified
Conjugation:	Unconjugated
Storage:	Store at -20°C as received.
Stability:	Stable for 12 months from date of receipt.
Predicted Protein Size:	80 kDa
Gene Name:	kelch like family member 4
Database Link:	NP_061990 Entrez Gene 56062 Human Q9C0H6



[View online »](#)

Background:

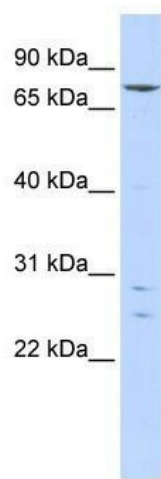
KLHL4 is a member of the kelch family of proteins, which are characterized by kelch repeat motifs and a POZ/BTB protein-binding domain. It is thought that kelch repeats are actin binding domains. However, the specific function of this protein has not been determined. This gene encodes a member of the kelch family of proteins, which are characterized by kelch repeat motifs and a POZ/BTB protein-binding domain. It is thought that kelch repeats are actin binding domains. However, the specific function of this protein has not been determined. Alternative splicing of this gene results in two transcript variants encoding different isoforms.

Synonyms:

DKELCHL; KHL4

Note:

Immunogen Sequence Homology: Pig: 100%; Human: 100%; Rat: 93%; Horse: 93%; Mouse: 93%; Rabbit: 93%; Bovine: 86%; Zebrafish: 79%

Product images:

WB Suggested Anti-KLHL4 Antibody Titration: 0.2-1 ug/ml; ELISA Titer: 1: 1562500; Positive Control: 293T cell lysate; KLHL4 is supported by BioGPS gene expression data to be expressed in HEK293T