

Product datasheet for **TA345261**

PRDM5 Rabbit Polyclonal Antibody

Product data:

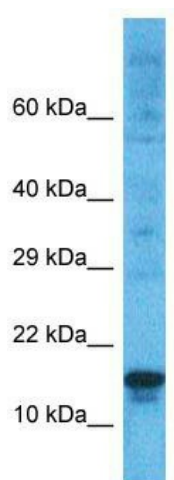
Product Type:	Primary Antibodies
Applications:	WB
Recommended Dilution:	WB
Reactivity:	Human
Host:	Rabbit
Isotype:	IgG
Clonality:	Polyclonal
Immunogen:	The immunogen for Anti-PRDM5 antibody is: synthetic peptide directed towards the N-terminal region of Human PRDM5. Synthetic peptide located within the following region: MGLYTARRVRKGEKFGPFAGEKRMPEDLDENMDYRLMWEVRGSKGEVLYI
Formulation:	Liquid. Purified antibody supplied in 1x PBS buffer with 0.09% (w/v) sodium azide and 2% sucrose. <i>Note that this product is shipped as lyophilized powder to China customers.</i>
Purification:	Affinity Purified
Conjugation:	Unconjugated
Storage:	Store at -20°C as received.
Stability:	Stable for 12 months from date of receipt.
Predicted Protein Size:	12 kDa
Gene Name:	PR domain 5
Database Link:	NP_001287752 Entrez Gene 11107 Human Q9NQX1
Background:	The protein encoded by this gene is a transcription factor of the PR-domain protein family. It contains a PR-domain and multiple zinc finger motifs. Transcription factors of the PR-domain family are known to be involved in cell differentiation and tumorigenesis.
Synonyms:	BCS2; PFM2
Note:	Immunogen Sequence Homology: Pig: 100%; Rat: 100%; Human: 100%; Mouse: 100%; Bovine: 100%; Zebrafish: 100%; Guinea pig: 100%; Horse: 85%



[View online »](#)

Protein Families: Transcription Factors

Product images:



Host: Rabbit; Target Name: PRDM5; Sample
Tissue: ACHN Whole Cell lysates; Antibody
Dilution: 1.0 ug/ml