

Product datasheet for **TA345259**

MESP1 Rabbit Polyclonal Antibody

Product data:

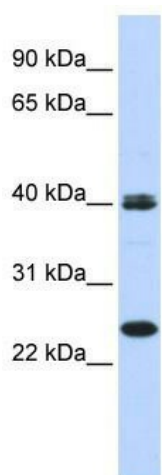
Product Type:	Primary Antibodies
Applications:	WB
Recommended Dilution:	WB
Reactivity:	Human
Host:	Rabbit
Isotype:	IgG
Clonality:	Polyclonal
Immunogen:	The immunogen for anti-MESP1 antibody: synthetic peptide directed towards the N terminal of human MESP1. Synthetic peptide located within the following region: SLVSSPDSWGSTPADSPVAsPARPGTLRDPRAPSVGRRGARSSRLGSGQR
Formulation:	Liquid. Purified antibody supplied in 1x PBS buffer with 0.09% (w/v) sodium azide and 2% sucrose. <i>Note that this product is shipped as lyophilized powder to China customers.</i>
Purification:	Affinity Purified
Conjugation:	Unconjugated
Storage:	Store at -20°C as received.
Stability:	Stable for 12 months from date of receipt.
Predicted Protein Size:	28 kDa
Gene Name:	mesoderm posterior bHLH transcription factor 1
Database Link:	NP_061140 Entrez Gene 55897 Human Q9BRJ9
Background:	MESP1 is a transcription factor. MESP1 plays a role in the epithelialization of somitic mesoderm and in the development of cardiac mesoderm. MESP1 defines the rostrocaudal patterning of the somites by participating in distinct Notch pathways.
Synonyms:	bHLHc5
Note:	Immunogen Sequence Homology: Human: 100%; Dog: 85%



[View online »](#)

Protein Families: Druggable Genome, Transcription Factors

Product images:



WB Suggested Anti-MESP1 Antibody Titration:
0.2-1 ug/ml; ELISA Titer: 1: 1562500; Positive
Control: 293T cell lysate