

Product datasheet for **TA345258**

BATF3 Rabbit Polyclonal Antibody

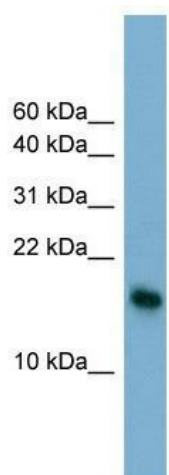
Product data:

Product Type:	Primary Antibodies
Applications:	WB
Recommended Dilution:	WB
Reactivity:	Human
Host:	Rabbit
Isotype:	IgG
Clonality:	Polyclonal
Immunogen:	The immunogen for anti-BATF3 antibody: synthetic peptide directed towards the N terminal of human BATF3. Synthetic peptide located within the following region: MSQGLPAAGSVLQRSVAAPGNQPQPQQSPEDDDRKVRREKNRVAAQ
Formulation:	Liquid. Purified antibody supplied in 1x PBS buffer with 0.09% (w/v) sodium azide and 2% sucrose. <i>Note that this product is shipped as lyophilized powder to China customers.</i>
Purification:	Affinity Purified
Conjugation:	Unconjugated
Storage:	Store at -20°C as received.
Stability:	Stable for 12 months from date of receipt.
Predicted Protein Size:	14 kDa
Gene Name:	basic leucine zipper ATF-like transcription factor 3
Database Link:	NP_061134 Entrez Gene 55509 Human Q9NR55
Background:	This gene encodes a member of the basic leucine zipper protein family. The encoded protein functions as a transcriptional repressor when heterodimerizing with JUN. The protein may play a role in repression of interleukin-2 and matrix metalloproteinase-1 t
Synonyms:	JDP1; JUNDM1; SNFT
Note:	Immunogen Sequence Homology: Dog: 100%; Pig: 100%; Horse: 100%; Human: 100%; Guinea pig: 100%; Bovine: 86%; Yeast: 83%



[View online »](#)

Product images:



WB Suggested Anti-BATF3 Antibody Titration: 0.2-1 ug/ml; ELISA Titer: 1: 312500; Positive Control: HT1080 cell lysate