

## Product datasheet for **TA345255**

### USE1 Rabbit Polyclonal Antibody

#### Product data:

Product Type:	Primary Antibodies
Applications:	IHC, WB
Recommended Dilution:	WB, IHC
Reactivity:	Human
Host:	Rabbit
Isotype:	IgG
Clonality:	Polyclonal
Immunogen:	The immunogen for anti-MDS032 antibody: synthetic peptide directed towards the N terminal of human MDS032. Synthetic peptide located within the following region: ELNLVRLLSRCEAMAAEKRPDEWRLEKYVGALEDMLQALKVHASKPASE
Formulation:	Liquid. Purified antibody supplied in 1x PBS buffer with 0.09% (w/v) sodium azide and 2% sucrose. <i>Note that this product is shipped as lyophilized powder to China customers.</i>
Purification:	Affinity Purified
Conjugation:	Unconjugated
Storage:	Store at -20°C as received.
Stability:	Stable for 12 months from date of receipt.
Predicted Protein Size:	29 kDa
Gene Name:	unconventional SNARE in the ER 1
Database Link:	<a href="#">NP_060937</a> <a href="#">Entrez Gene 55850 Human</a> <a href="#">Q9NZ43</a>
Background:	MDS032 belongs to the USE1 family and is a component of a SNARE complex which may be involved in targeting and fusion of Golgi-derived retrograde transport vesicles with the ER.
Synonyms:	D12; MDS032; P31; SLT1
Note:	Immunogen Sequence Homology: Pig: 100%; Horse: 100%; Human: 100%; Yeast: 100%; Bovine: 100%; Dog: 93%; Rat: 93%; Mouse: 93%; Guinea pig: 93%; Zebrafish: 77%

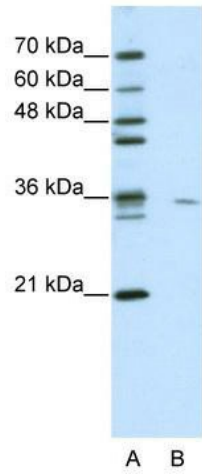


[View online »](#)

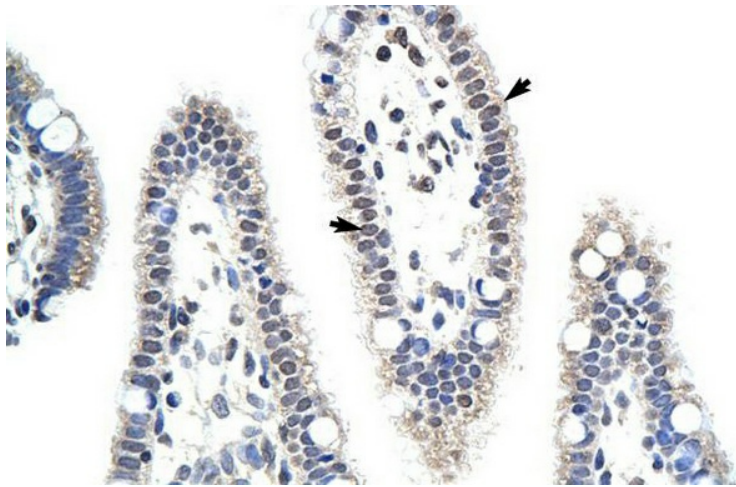
Protein Families: Transmembrane

Protein Pathways: SNARE interactions in vesicular transport

**Product images:**



WB Suggested Anti-MDS032 Antibody Titration: 0.2-1 ug/ml; ELISA Titer: 1: 62500; Positive Control: Jurkat cell lysate; USE1 is supported by BioGPS gene expression data to be expressed in Jurkat



Human Intestine