

Product datasheet for TA345252

RRN3 Rabbit Polyclonal Antibody

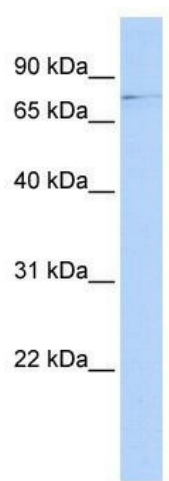
Product data:

Product Type:	Primary Antibodies
Applications:	WB
Recommended Dilution:	WB
Reactivity:	Human
Host:	Rabbit
Isotype:	IgG
Clonality:	Polyclonal
Immunogen:	The immunogen for anti-RRN3 antibody: synthetic peptide directed towards the middle region of human RRN3. Synthetic peptide located within the following region: DPIYQVWEDMSAEELQEFKKPMKKDIVEDEDDFLKGEVPQNDTVIGITP
Formulation:	Liquid. Purified antibody supplied in 1x PBS buffer with 0.09% (w/v) sodium azide and 2% sucrose.
Purification:	Affinity Purified
Conjugation:	Unconjugated
Storage:	Store at -20°C as received.
Stability:	Stable for 12 months from date of receipt.
Predicted Protein Size:	74 kDa
Gene Name:	RRN3 homolog, RNA polymerase I transcription factor
Database Link:	NP_060897 Entrez Gene 54700 Human Q9NYV6
Background:	RRN3 is RNA polymerase I-specific transcription initiation factor. Phosphorylation of RRN3 by MAPK cascades links cell signaling with the control of gene expression, namely results in rRNA synthesis in turn cell growth.
Synonyms:	A-270G1.2; TIFIA
Note:	Immunogen Sequence Homology: Human: 100%; Rabbit: 100%; Pig: 93%; Rat: 93%; Mouse: 93%; Guinea pig: 93%


[View online »](#)

Protein Families: Transcription Factors

Product images:



WB Suggested Anti-RRN3 Antibody Titration: 0.2-1 ug/ml; ELISA Titer: 1: 312500; Positive Control: HeLa cell lysate; RRN3 is supported by BioGPS gene expression data to be expressed in HeLa