

Product datasheet for **TA345251**

DCP1A Rabbit Polyclonal Antibody

Product data:

Product Type:	Primary Antibodies
Applications:	WB
Recommended Dilution:	WB
Reactivity:	Human
Host:	Rabbit
Isotype:	IgG
Clonality:	Polyclonal
Immunogen:	The immunogen for anti-DCP1A antibody: synthetic peptide directed towards the N terminal of human DCP1A. Synthetic peptide located within the following region: MEALS RAGQEMSLAALKQHDPYITSIADLTGQVALYFCPKANQWEKTDI
Formulation:	Liquid. Purified antibody supplied in 1x PBS buffer with 0.09% (w/v) sodium azide and 2% sucrose. <i>Note that this product is shipped as lyophilized powder to China customers.</i>
Purification:	Protein A purified
Conjugation:	Unconjugated
Storage:	Store at -20°C as received.
Stability:	Stable for 12 months from date of receipt.
Predicted Protein Size:	56 kDa
Gene Name:	decapping mRNA 1A
Database Link:	NP_060873 Entrez Gene 55802 Human Q9NPI6



[View online »](#)

Background:

Decapping is a key step in general and regulated mRNA decay. The protein encoded by this gene is a decapping enzyme. This protein and another decapping enzyme form a decapping complex, which interacts with the nonsense-mediated decay factor hUpf1 and may be recruited to mRNAs containing premature termination codons. This protein also participates in the TGF-beta signaling pathway. Decapping is a key step in general and regulated mRNA decay. The protein encoded by this gene is a decapping enzyme. This protein and another decapping enzyme form a decapping complex, which interacts with the nonsense-mediated decay factor hUpf1 and may be recruited to mRNAs containing premature termination codons. This protein also participates in the TGF-beta signaling pathway.

Synonyms:

HSA275986; Nbla00360; SMAD4IP1; SMIF

Note:

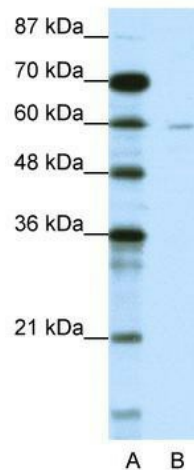
Immunogen Sequence Homology: Dog: 100%; Pig: 100%; Rat: 100%; Horse: 100%; Human: 100%; Bovine: 100%; Rabbit: 100%; Guinea pig: 100%; Mouse: 93%; Zebrafish: 86%

Protein Families:

Transcription Factors

Protein Pathways:

RNA degradation

Product images:

WB Suggested Anti-DCP1A Antibody Titration:
1.25 ug/ml; ELISA Titer: 1: 312500; Positive
Control: Jurkat cell lysate; DCP1A is supported by
BioGPS gene expression data to be expressed in
Jurkat