

## Product datasheet for **TA345249**

### ZNF415 Rabbit Polyclonal Antibody

#### Product data:

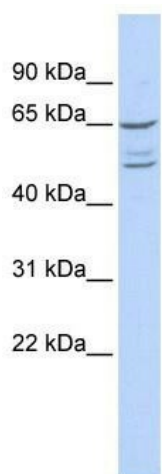
Product Type:	Primary Antibodies
Applications:	WB
Recommended Dilution:	WB
Reactivity:	Human
Host:	Rabbit
Isotype:	IgG
Clonality:	Polyclonal
Immunogen:	The immunogen for anti-ZNF415 antibody: synthetic peptide directed towards the N terminal of human ZNF415. Synthetic peptide located within the following region: MAFTQLTRDVAIEFSQDEWKCLNSTQRTLYRDVMLENYRNLVSLDLSRN
Formulation:	Liquid. Purified antibody supplied in 1x PBS buffer with 0.09% (w/v) sodium azide and 2% sucrose. <i>Note that this product is shipped as lyophilized powder to China customers.</i>
Purification:	Affinity Purified
Conjugation:	Unconjugated
Storage:	Store at -20°C as received.
Stability:	Stable for 12 months from date of receipt.
Predicted Protein Size:	64 kDa
Gene Name:	zinc finger protein 415
Database Link:	<a href="#">NP_060825</a> <a href="#">Entrez Gene 55786 Human</a> <a href="#">Q09FC8</a>
Background:	ZNF415 is involved in transcriptional regulation. The transcriptional activity differed among the various isoforms. All isoforms except isoform 3 seem to suppress the transcriptional activities of AP-1 and p53.
Synonyms:	ZfLp
Note:	Immunogen Sequence Homology: Rat: 100%; Human: 100%; Mouse: 100%; Pig: 93%; Horse: 93%; Sheep: 93%; Bovine: 93%



[View online »](#)

Protein Families: Transcription Factors

### Product images:



WB Suggested Anti-ZNF415 Antibody Titration:  
0.2-1 ug/ml; ELISA Titer: 1: 312500; Positive  
Control: 293T cell lysate