

## Product datasheet for **TA345247**

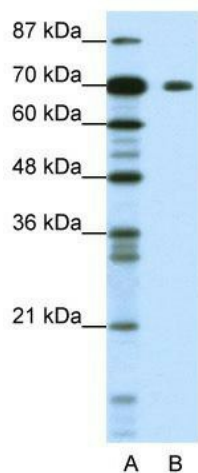
### KLHL26 Rabbit Polyclonal Antibody

#### Product data:

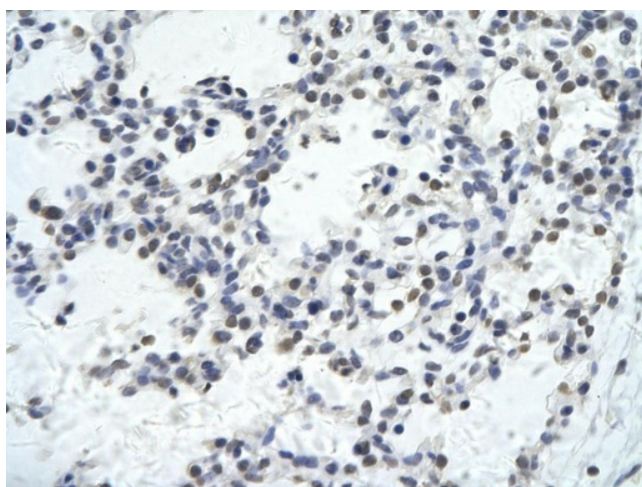
Product Type:	Primary Antibodies
Applications:	IHC, WB
Recommended Dilution:	WB
Reactivity:	Human
Host:	Rabbit
Isotype:	IgG
Clonality:	Polyclonal
Immunogen:	The immunogen for anti-KLHL26 antibody: synthetic peptide directed towards the C terminal of human KLHL26. Synthetic peptide located within the following region: EAGCCLLERKIYIVGGYNWRLNNVTGIVQVYNTDTDEWERDLHFPEFAG
Formulation:	Liquid. Purified antibody supplied in 1x PBS buffer with 0.09% (w/v) sodium azide and 2% sucrose.
Purification:	Protein A purified
Conjugation:	Unconjugated
Storage:	Store at -20°C as received.
Stability:	Stable for 12 months from date of receipt.
Predicted Protein Size:	68 kDa
Gene Name:	kelch like family member 26
Database Link:	<a href="#">NP_060786</a> <a href="#">Entrez Gene 55295 Human</a> <a href="#">Q53HC5</a>
Background:	The function of KLHL26 remains unknown.
Synonyms:	FLJ11078
Note:	Immunogen Sequence Homology: Human: 100%; Rabbit: 100%; Pig: 93%; Rat: 93%; Horse: 93%; Mouse: 93%; Bovine: 93%; Zebrafish: 93%; Guinea pig: 93%



[View online »](#)

**Product images:**

WB Suggested Anti-KLHL26 Antibody Titration: 1.25 ug/ml; ELISA Titer: 1: 1562500; Positive Control: Jurkat cell lysate; KLHL26 is supported by BioGPS gene expression data to be expressed in Jurkat



Rabbit Anti-KLHL26 antibody; Paraffin Embedded Tissue: Human Lung cell; Cellular Data: Epithelial cells of renal tubule; Antibody Concentration: 4.0-8.0 ug/ml; Magnification: 400X