

Product datasheet for **TA345244**

TRIM62 Rabbit Polyclonal Antibody

Product data:

Product Type:	Primary Antibodies
Applications:	WB
Recommended Dilution:	WB
Reactivity:	Human
Host:	Rabbit
Isotype:	IgG
Clonality:	Polyclonal
Immunogen:	The immunogen for anti-TRIM62 antibody: synthetic peptide directed towards the middle region of human TRIM62. Synthetic peptide located within the following region: GLLIFYNADDMSWLYTFREKFPKLCSEYFSPGQSHANGKNVQPLRINTVR
Formulation:	Liquid. Purified antibody supplied in 1x PBS buffer with 0.09% (w/v) sodium azide and 2% sucrose. <i>Note that this product is shipped as lyophilized powder to China customers.</i>
Purification:	Affinity Purified
Conjugation:	Unconjugated
Storage:	Store at -20°C as received.
Stability:	Stable for 12 months from date of receipt.
Predicted Protein Size:	54 kDa
Gene Name:	tripartite motif containing 62
Database Link:	NP_060677 Entrez Gene 55223 Human Q9BVG3
Background:	TRIM62 contains 1 RING-type zinc finger, which is probably involved in mediating protein-protein interactions. RING-type zinc finger was identified in a group of proteins with a wide range of functions such as viral replication, signal transduction, and development. But the function of TRIM62 remains unknown.
Synonyms:	DEAR1

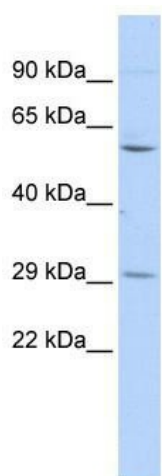


[View online »](#)

Note: Immunogen Sequence Homology: Dog: 100%; Pig: 100%; Rat: 100%; Horse: 100%; Human: 100%; Mouse: 100%; Bovine: 100%; Rabbit: 100%; Zebrafish: 100%; Guinea pig: 100%

Protein Families: Druggable Genome

Product images:



WB Suggested Anti-TRIM62 Antibody Titration:
0.2-1 ug/ml; ELISA Titer: 1: 312500; Positive
Control: 293T cell lysate