

Product datasheet for **TA345240**

ZFP64 Rabbit Polyclonal Antibody

Product data:

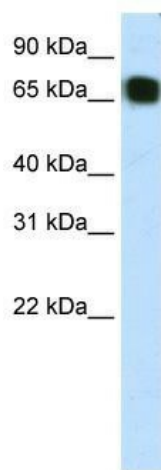
Product Type:	Primary Antibodies
Applications:	WB
Recommended Dilution:	WB
Reactivity:	Human
Host:	Rabbit
Isotype:	IgG
Clonality:	Polyclonal
Immunogen:	The immunogen for anti-ZFP64 antibody: synthetic peptide directed towards the C terminal of human ZFP64. Synthetic peptide located within the following region: SDGGQNI AVATTAPPV FSSSSQQLPKQTY SIIQGAAHPALLCPADSIPD
Formulation:	Liquid. Purified antibody supplied in 1x PBS buffer with 0.09% (w/v) sodium azide and 2% sucrose. <i>Note that this product is shipped as lyophilized powder to China customers.</i>
Purification:	Protein A purified
Conjugation:	Unconjugated
Storage:	Store at -20°C as received.
Stability:	Stable for 12 months from date of receipt.
Predicted Protein Size:	69 kDa
Gene Name:	ZFP64 zinc finger protein
Database Link:	NP_071371 Entrez Gene 55734 Human Q9NTW7
Background:	ZFP64 belongs to the krueppel C2H2-type zinc-finger protein family. It contains 9 C2H2-type zinc fingers and may be involved in transcriptional regulation.
Synonyms:	ZNF338
Note:	Immunogen Sequence Homology: Dog: 100%; Pig: 100%; Human: 100%; Bovine: 100%; Rat: 93%; Guinea pig: 93%; Mouse: 92%



[View online »](#)

Protein Families: Transcription Factors

Product images:



WB Suggested Anti-ZFP64 Antibody Titration: 1.25 ug/ml; ELISA Titer: 1: 1562500; Positive Control: Transfected 293T