

Product datasheet for **TA345238**

Baf180 (PBRM1) Rabbit Polyclonal Antibody

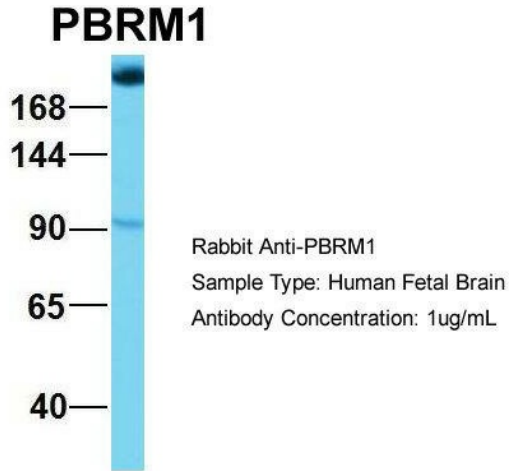
Product data:

Product Type:	Primary Antibodies
Applications:	WB
Recommended Dilution:	WB
Reactivity:	Human
Host:	Rabbit
Isotype:	IgG
Clonality:	Polyclonal
Immunogen:	The immunogen for anti-PBRM1 antibody: synthetic peptide directed towards the middle region of human PBRM1. Synthetic peptide located within the following region: SAESNSISKWDQTLAARRRDVHLSKEQESRLPSHWLKSJGAHTTMADALW
Formulation:	Liquid. Purified antibody supplied in 1x PBS buffer with 0.09% (w/v) sodium azide and 2% sucrose.
Purification:	Affinity Purified
Conjugation:	Unconjugated
Storage:	Store at -20°C as received.
Stability:	Stable for 12 months from date of receipt.
Predicted Protein Size:	181 kDa
Gene Name:	polybromo 1
Database Link:	NP_060783 Entrez Gene 55193 Human Q86U86
Background:	PBRM1 is involved in transcriptional activation and repression of select genes by chromatin remodeling (alteration of DNA-nucleosome topology).
Synonyms:	BAF180; PB1
Note:	Immunogen Sequence Homology: Dog: 100%; Pig: 100%; Rat: 100%; Horse: 100%; Human: 100%; Mouse: 100%; Bovine: 100%; Zebrafish: 100%; Guinea pig: 100%
Protein Families:	Druggable Genome

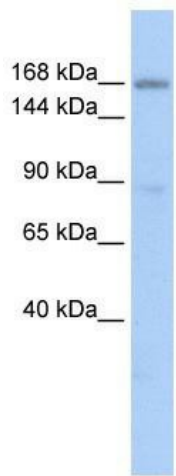


[View online »](#)

Product images:



Hum. Fetal Brain; Host: Rabbit; Target Name: NOP56; Sample Tissue: Human Fetal Brain; Antibody Dilution: 1.0 ug/ml



WB Suggested Anti-PBRM1 Antibody Titration: 0.2-1 ug/ml; ELISA Titer: 1: 1562500; Positive Control: HepG2 cell lysate; PBRM1 is supported by BioGPS gene expression data to be expressed in HepG2