

Product datasheet for **TA345236**

TRIM68 Rabbit Polyclonal Antibody

Product data:

Product Type:	Primary Antibodies
Applications:	IHC, WB
Recommended Dilution:	WB, IHC
Reactivity:	Human
Host:	Rabbit
Isotype:	IgG
Clonality:	Polyclonal
Immunogen:	The immunogen for anti-TRIM68 antibody: synthetic peptide directed towards the middle region of human TRIM68. Synthetic peptide located within the following region: VIRLRKGNEYRAGTDEYPILSLPVPVRRVGFVDYEAHDISFYNVTDGCS
Formulation:	Liquid. Purified antibody supplied in 1x PBS buffer with 0.09% (w/v) sodium azide and 2% sucrose. <i>Note that this product is shipped as lyophilized powder to China customers.</i>
Purification:	Affinity Purified
Conjugation:	Unconjugated
Storage:	Store at -20°C as received.
Stability:	Stable for 12 months from date of receipt.
Predicted Protein Size:	56 kDa
Gene Name:	tripartite motif containing 68
Database Link:	NP_060543 Entrez Gene 55128 Human Q6AZZ1



[View online »](#)

Background:

The protein encoded by TRIM68 contains a RING finger domain, a motif present in a variety of functionally distinct proteins and known to be involved in protein-protein and protein-DNA interactions. TRIM68 is expressed in many cancer cell lines. Its expression in normal tissues, however, was found to be restricted to prostate. TRIM68 was also found to be differentially expressed in androgen-dependent versus androgen-independent prostate cancer cells. The protein encoded by this gene contains a RING finger domain, a motif present in a variety of functionally distinct proteins and known to be involved in protein-protein and protein-DNA interactions. This gene is expressed in many cancer cell lines. Its expression in normal tissues, however, was found to be restricted to prostate. This gene was also found to be differentially expressed in androgen-dependent versus androgen-independent prostate cancer cells.

Synonyms:

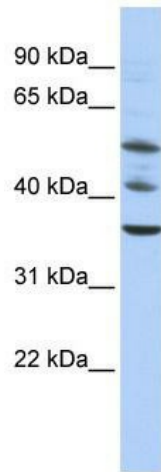
GC109; RNF137; SS-56; SS56

Note:

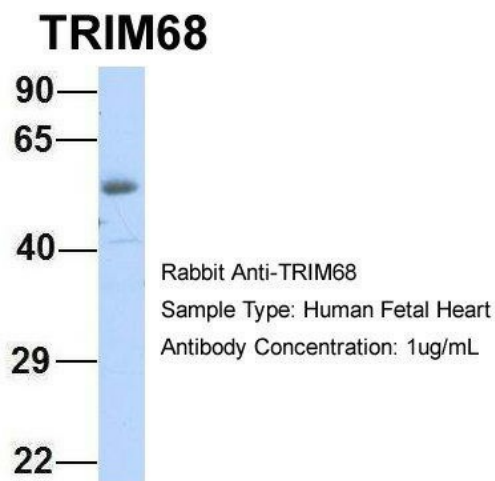
Immunogen Sequence Homology: Pig: 100%; Rat: 100%; Horse: 100%; Human: 100%; Mouse: 100%; Bovine: 100%; Dog: 79%; Rabbit: 79%

Protein Families:

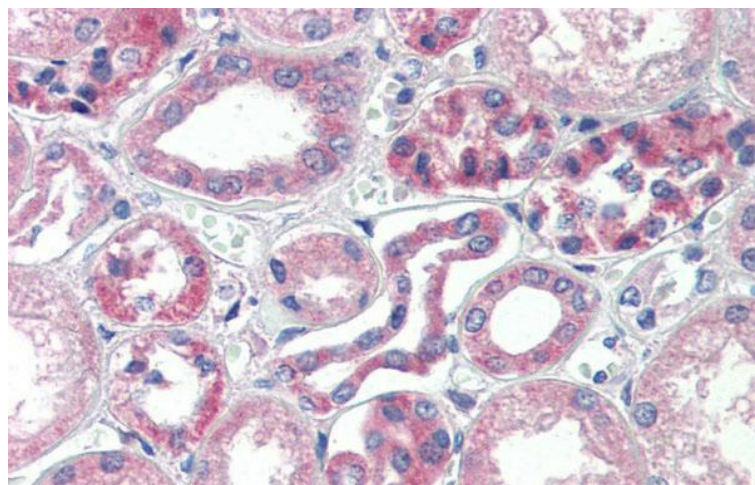
Druggable Genome

Product images:

WB Suggested Anti-TRIM68 Antibody Titration:
0.2-1 ug/ml; ELISA Titer: 1: 1562500; Positive
Control: HepG2 cell lysate



Host: Rabbit; Target Name: TRIM68; Sample Tissue: Human Fetal Heart; Antibody Dilution: 1.0 ug/ml



Immunohistochemistry with Human kidney lysate tissue at an antibody concentration of 5.0 ug/ml using anti-TRIM68 antibody