

Product datasheet for TA345235

KDM4D Rabbit Polyclonal Antibody

Product data:

Product Type:	Primary Antibodies
Applications:	IHC, WB
Recommended Dilution:	WB, IHC
Reactivity:	Human
Host:	Rabbit
Isotype:	IgG
Clonality:	Polyclonal
Immunogen:	The immunogen for anti-JMJD2D antibody: synthetic peptide directed towards the C terminal of human JMJD2D. Synthetic peptide located within the following region: RAQELTLQTPAKRPLLAGTTCTASGPEPEPLPEDGALMDKPVPLSPGLQH
Formulation:	Liquid. Purified antibody supplied in 1x PBS buffer with 0.09% (w/v) sodium azide and 2% sucrose. <i>Note that this product is shipped as lyophilized powder to China customers.</i>
Purification:	Affinity Purified
Conjugation:	Unconjugated
Storage:	Store at -20°C as received.
Stability:	Stable for 12 months from date of receipt.
Predicted Protein Size:	59 kDa
Gene Name:	lysine demethylase 4D
Database Link:	NP_060509 Entrez Gene 55693 Human Q6B0I6
Background:	JMJD2D belongs to JMJD2 family that is consist of four cancer-associated genes
Synonyms:	JMJD2D
Note:	Immunogen Sequence Homology: Human: 100%

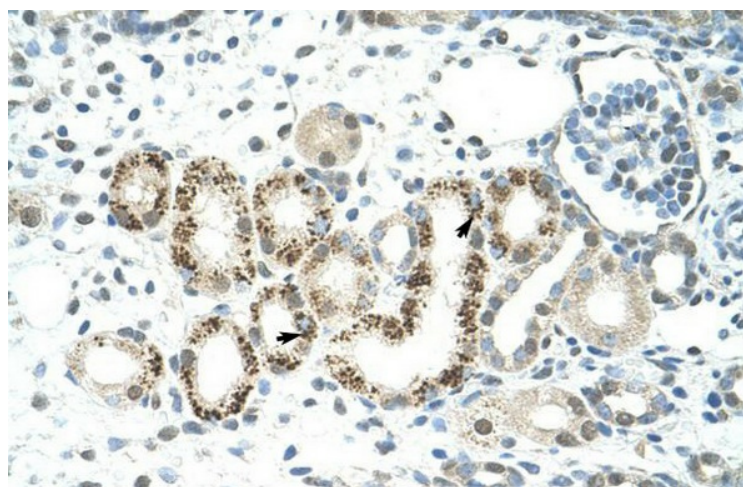


[View online »](#)

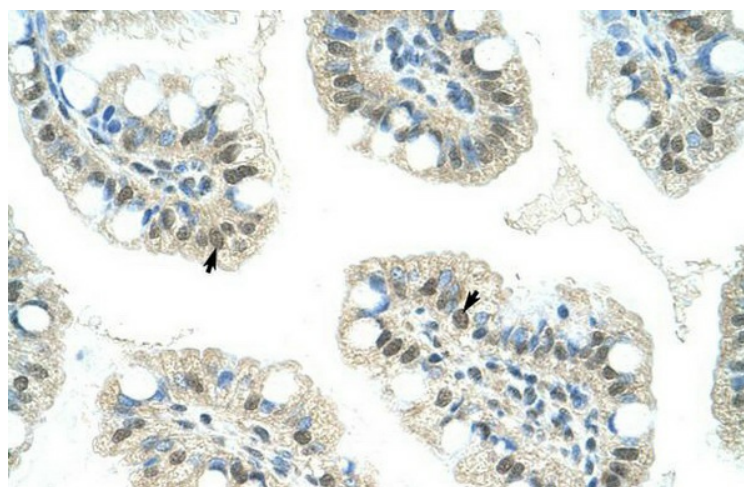
Product images:



WB Suggested Anti-JMJD2D Antibody Titration:
0.2-1 ug/ml; Positive Control: Human brain



Human kidney



Human Intestine