

## Product datasheet for **TA345234**

### CTIP1 (BCL11A) Rabbit Polyclonal Antibody

#### Product data:

Product Type:	Primary Antibodies
Applications:	IHC, WB
Recommended Dilution:	WB, IHC
Reactivity:	Human
Host:	Rabbit
Isotype:	IgG
Clonality:	Polyclonal
Immunogen:	The immunogen for anti-BCL11A antibody: synthetic peptide directed towards the N terminal of human BCL11A. Synthetic peptide located within the following region: MSRRKQGKPKHLSKREFSPEPLEAILTDDEPDHGPLGAPEGDHDLLTCGQ
Formulation:	Liquid. Purified antibody supplied in 1x PBS buffer with 0.09% (w/v) sodium azide and 2% sucrose. <i>Note that this product is shipped as lyophilized powder to China customers.</i>
Purification:	Affinity Purified
Conjugation:	Unconjugated
Storage:	Store at -20°C as received.
Stability:	Stable for 12 months from date of receipt.
Predicted Protein Size:	91 kDa
Gene Name:	B-cell CLL/lymphoma 11A
Database Link:	<a href="#">NP_075044</a> <a href="#">Entrez Gene 53335 Human Q9H165</a>



[View online »](#)

**Background:**

BCL11A is a C2H2 type zinc-finger protein by its similarity to the mouse Bcl11a/Evi9 protein. The corresponding mouse gene is a common site of retroviral integration in myeloid leukemia, and may function as a leukemia disease gene, in part, through its interaction with BCL6. During hematopoietic cell differentiation, this gene is down-regulated. It is possibly involved in lymphoma pathogenesis since translocations associated with B-cell malignancies also deregulate its expression. This gene encodes a C2H2 type zinc-finger protein by its similarity to the mouse Bcl11a/Evi9 protein. The corresponding mouse gene is a common site of retroviral integration in myeloid leukemia, and may function as a leukemia disease gene, in part, through its interaction with BCL6. During hematopoietic cell differentiation, this gene is down-regulated. It is possibly involved in lymphoma pathogenesis since translocations associated with B-cell malignancies also deregulate its expression. Multiple transcript variants encoding several different isoforms have been found for this gene.

**Synonyms:**

BCL11A-L; BCL11a-M; BCL11A-S; BCL11A-XL; CTIP1; DILOS; EVI9; HBFQTL5; ZNF856

**Note:**

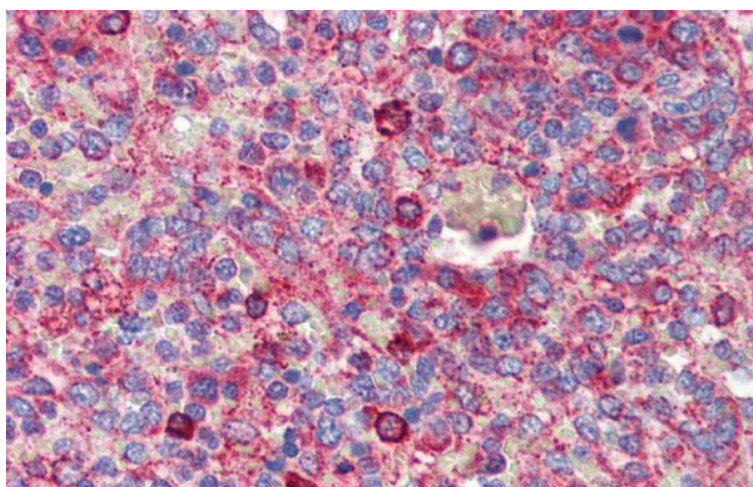
Immunogen Sequence Homology: Dog: 100%; Pig: 100%; Rat: 100%; Horse: 100%; Human: 100%; Mouse: 100%; Bovine: 100%; Zebrafish: 100%

**Protein Families:**

Transcription Factors

**Product images:**

WB Suggested Anti-BCL11A Antibody Titration:  
0.2-1 ug/ml; ELISA Titer: 1: 1562500; Positive  
Control: Human heart



Immunohistochemistry with Human Spleen lysate tissue at an antibody concentration of 5.0 ug/ml using anti-BCL11A antibody