

Product datasheet for **TA345231**

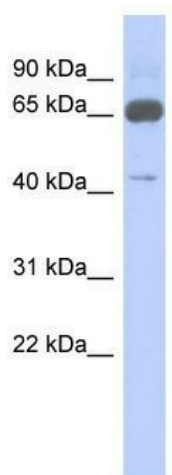
ZNF446 Rabbit Polyclonal Antibody

Product data:

Product Type:	Primary Antibodies
Applications:	WB
Recommended Dilution:	WB
Reactivity:	Human
Host:	Rabbit
Isotype:	IgG
Clonality:	Polyclonal
Immunogen:	The immunogen for anti-ZNF446 antibody: synthetic peptide directed towards the N terminal of human ZNF446. Synthetic peptide located within the following region: MPSPLGPPCLPVMDPETTLEEPETARLRFRGFCYQEVAGPREALARLREL
Formulation:	Liquid. Purified antibody supplied in 1x PBS buffer with 0.09% (w/v) sodium azide and 2% sucrose.
Purification:	Affinity Purified
Conjugation:	Unconjugated
Storage:	Store at -20°C as received.
Stability:	Stable for 12 months from date of receipt.
Predicted Protein Size:	49 kDa
Gene Name:	zinc finger protein 446
Database Link:	NP_060378 Entrez Gene 55663 Human Q9NWS9
Background:	ZNF446 contains a KRAB and three C(2)H(2) zinc fingers. ZNF446 is a transcription repressor when fused to GAL4 DNA-binding domain and co-transfected with VP-16. Overexpression of ZNF446 in COS-7 cells inhibits the transcriptional activities of SRE and AP-
Synonyms:	ZKSCAN20; ZSCAN30; ZSCAN52
Note:	Immunogen Sequence Homology: Human: 100%; Rat: 90%; Mouse: 90%
Protein Families:	Transcription Factors



[View online »](#)

Product images:

WB Suggested Anti-ZNF446 Antibody Titration:
0.2-1 ug/ml; ELISA Titer: 1: 62500; Positive
Control: Human kidney