

Product datasheet for **TA345230**

HIF1AN Rabbit Polyclonal Antibody

Product data:

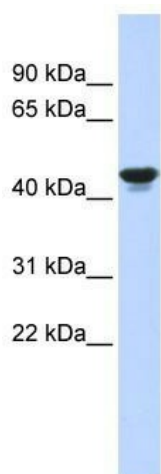
Product Type:	Primary Antibodies
Applications:	WB
Recommended Dilution:	WB
Reactivity:	Human, Mouse
Host:	Rabbit
Isotype:	IgG
Clonality:	Polyclonal
Immunogen:	The immunogen for anti-HIF1AN antibody: synthetic peptide directed towards the middle region of human HIF1AN. Synthetic peptide located within the following region: GGITITVNFWYKGAPTPKRIEYPLKAHQKVAIMRNIEKMLGEALGNPQEV
Formulation:	Liquid. Purified antibody supplied in 1x PBS buffer with 0.09% (w/v) sodium azide and 2% sucrose. <i>Note that this product is shipped as lyophilized powder to China customers.</i>
Purification:	Affinity Purified
Conjugation:	Unconjugated
Storage:	Store at -20°C as received.
Stability:	Stable for 12 months from date of receipt.
Predicted Protein Size:	40 kDa
Gene Name:	hypoxia inducible factor 1 alpha subunit inhibitor
Database Link:	NP_060372 Entrez Gene 319594 Mouse Entrez Gene 55662 Human Q9NWT6
Background:	HIF1AN is a co-repressor that interacts with hypoxia-inducible factor 1 (HIF-1) alpha and the von Hippel-Lindau tumor suppressor protein to mediate repression of HIF-1 transcriptional activity.
Synonyms:	FIH1
Note:	Immunogen Sequence Homology: Dog: 100%; Pig: 100%; Rat: 100%; Horse: 100%; Human: 100%; Mouse: 100%; Bovine: 100%; Rabbit: 100%; Zebrafish: 100%; Guinea pig: 100%



[View online »](#)

Protein Families: Druggable Genome

Product images:



WB Suggested Anti-HIF1AN Antibody Titration:
0.2-1 ug/ml; ELISA Titer: 1: 1562500; Positive
Control: Human Muscle