

Product datasheet for **TA345228**

SOHLH2 Rabbit Polyclonal Antibody

Product data:

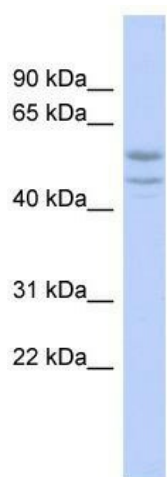
Product Type:	Primary Antibodies
Applications:	WB
Recommended Dilution:	WB
Reactivity:	Human
Host:	Rabbit
Isotype:	IgG
Clonality:	Polyclonal
Immunogen:	The immunogen for anti-SOHLH2 antibody: synthetic peptide directed towards the middle region of human SOHLH2. Synthetic peptide located within the following region: LNSLHTVRYYSKVTPSYDATAVTNQNISIHLPSPAMPPVSKLLPRYCTSGL
Formulation:	Liquid. Purified antibody supplied in 1x PBS buffer with 0.09% (w/v) sodium azide and 2% sucrose. <i>Note that this product is shipped as lyophilized powder to China customers.</i>
Purification:	Affinity Purified
Conjugation:	Unconjugated
Storage:	Store at -20°C as received.
Stability:	Stable for 12 months from date of receipt.
Predicted Protein Size:	47 kDa
Gene Name:	spermatogenesis and oogenesis specific basic helix-loop-helix 2
Database Link:	NP_060296 Entrez Gene 54937 Human Q9NX45
Background:	SOHLH2 is the probable transcription factor, which may be involved in spermatogenesis and oogenesis.
Synonyms:	bHLHe81; SOSF2; SPATA28; TEB1
Note:	Immunogen Sequence Homology: Human: 100%; Rabbit: 93%; Dog: 86%; Pig: 85%; Guinea pig: 85%; Bovine: 79%



[View online »](#)

Protein Families: Transcription Factors

Product images:



WB Suggested Anti-SOHLH2 Antibody Titration:
0.2-1 ug/ml; ELISA Titer: 1: 62500; Positive
Control: OVCAR-3 cell lysate