

Product datasheet for **TA345221**

NKRF Rabbit Polyclonal Antibody

Product data:

Product Type:	Primary Antibodies
Applications:	IHC, WB
Recommended Dilution:	WB, IHC
Reactivity:	Human
Host:	Rabbit
Isotype:	IgG
Clonality:	Polyclonal
Immunogen:	The immunogen for anti-NKRF antibody: synthetic peptide directed towards the middle region of human NKRF. Synthetic peptide located within the following region: QKYGLKSKSHGVGHDRYLVVGRKRRKEDLLDQLKQEGQVGHYELVMPQAN
Formulation:	Liquid. Purified antibody supplied in 1x PBS buffer with 0.09% (w/v) sodium azide and 2% sucrose. <i>Note that this product is shipped as lyophilized powder to China customers.</i>
Purification:	Affinity Purified
Conjugation:	Unconjugated
Storage:	Store at -20°C as received.
Stability:	Stable for 12 months from date of receipt.
Predicted Protein Size:	78 kDa
Gene Name:	NFKB repressing factor
Database Link:	NP_060014 Entrez Gene 55922 Human O15226



[View online »](#)

Background:

NKRF is a transcription factor that interacts with specific negative regulatory elements (NREs) to mediate transcriptional repression of certain NK-kappa-B-responsive genes. NKRF localizes predominantly to the nucleolus with a small fraction found in the nucleoplasm and cytoplasm. This gene encodes a transcription factor that interacts with specific negative regulatory elements (NREs) to mediate transcriptional repression of certain NK-kappa-B-responsive genes. The protein localizes predominantly to the nucleolus with a small fraction found in the nucleoplasm and cytoplasm. This gene encodes a transcription factor that interacts with specific negative regulatory elements (NREs) to mediate transcriptional repression of certain NK-kappa-B-responsive genes. The protein localizes predominantly to the nucleolus with a small fraction found in the nucleoplasm and cytoplasm.

Synonyms:

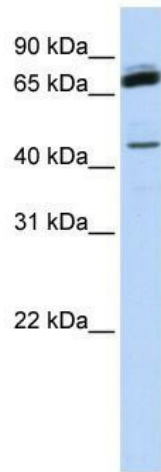
ITBA4; NRF

Note:

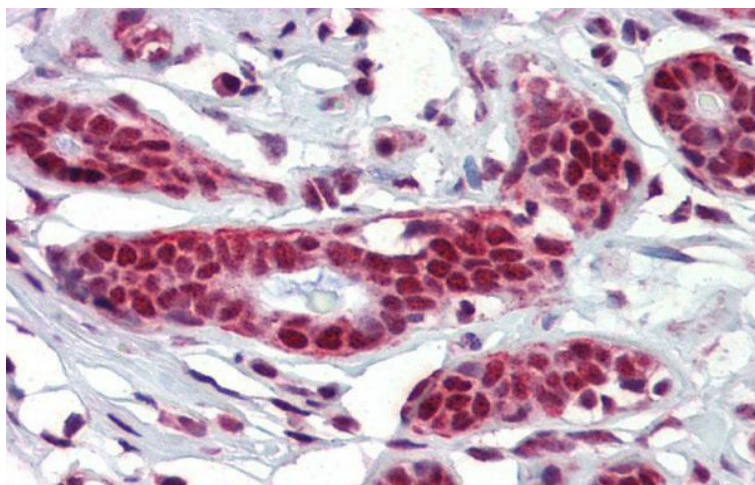
Immunogen Sequence Homology: Dog: 100%; Pig: 100%; Rat: 100%; Horse: 100%; Human: 100%; Mouse: 100%; Bovine: 100%; Rabbit: 100%; Guinea pig: 100%

Protein Families:

Transcription Factors

Product images:

WB Suggested Anti-NKRF Antibody Titration: 0.2-1 ug/ml; ELISA Titer: 1: 1562500; Positive Control: Human Muscle



Immunohistochemistry with Human Breast tissue at an antibody concentration of 5.0 ug/ml using anti-NKRF antibody