

Product datasheet for **TA345220**

NKRF Rabbit Polyclonal Antibody

Product data:

Product Type:	Primary Antibodies
Applications:	WB
Recommended Dilution:	WB
Reactivity:	Human
Host:	Rabbit
Isotype:	IgG
Clonality:	Polyclonal
Immunogen:	The immunogen for anti-NKRF antibody: synthetic peptide directed towards the N terminal of human NKRF. Synthetic peptide located within the following region: MEKILQMAEGIDIGEMPSYDLVLSKPSKGQKRHLSTCDGQNPPKKQAGSK
Formulation:	Liquid. Purified antibody supplied in 1x PBS buffer with 0.09% (w/v) sodium azide and 2% sucrose. <i>Note that this product is shipped as lyophilized powder to China customers.</i>
Purification:	Protein A purified
Conjugation:	Unconjugated
Storage:	Store at -20°C as received.
Stability:	Stable for 12 months from date of receipt.
Predicted Protein Size:	44 kDa
Gene Name:	NFKB repressing factor
Database Link:	NP_060014 Entrez Gene 55922 Human O15226



[View online »](#)

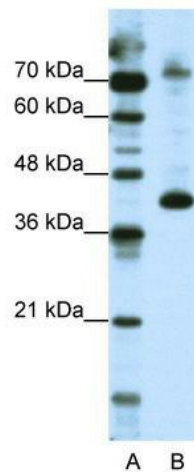
Background: NKRF is a transcription factor that interacts with specific negative regulatory elements (NREs) to mediate transcriptional repression of certain NK-kappa-B-responsive genes. NKRF localizes predominantly to the nucleolus with a small fraction found in the nucleoplasm and cytoplasm. This gene encodes a transcription factor that interacts with specific negative regulatory elements (NREs) to mediate transcriptional repression of certain NK-kappa-B-responsive genes. The protein localizes predominantly to the nucleolus with a small fraction found in the nucleoplasm and cytoplasm.

Synonyms: ITBA4; NRF

Note: Immunogen Sequence Homology: Dog: 100%; Pig: 100%; Horse: 100%; Human: 100%; Rat: 93%; Bovine: 93%; Rabbit: 93%; Guinea pig: 93%; Mouse: 86%

Protein Families: Transcription Factors

Product images:



WB Suggested Anti-NKRF Antibody Titration: 2.5 ug/ml; ELISA Titer: 1: 1562500; Positive Control: HepG2 cell lysate