

## Product datasheet for **TA345217**

### CHRAC1 Rabbit Polyclonal Antibody

#### Product data:

Product Type:	Primary Antibodies
Applications:	WB
Recommended Dilution:	WB
Reactivity:	Human
Host:	Rabbit
Isotype:	IgG
Clonality:	Polyclonal
Immunogen:	The immunogen for anti-CHRAC1 antibody: synthetic peptide directed towards the middle region of human CHRAC1. Synthetic peptide located within the following region: SETFQFLADILPKKILASKYKMLKKEEKREDEENDNDNESDHDEADS
Formulation:	Liquid. Purified antibody supplied in 1x PBS buffer with 0.09% (w/v) sodium azide and 2% sucrose. <i>Note that this product is shipped as lyophilized powder to China customers.</i>
Purification:	Affinity Purified
Conjugation:	Unconjugated
Storage:	Store at -20°C as received.
Stability:	Stable for 12 months from date of receipt.
Predicted Protein Size:	15 kDa
Gene Name:	chromatin accessibility complex 1
Database Link:	<a href="#">NP_059140</a> <a href="#">Entrez Gene 54108 Human</a> <a href="#">Q9NRG0</a>
Background:	CHRAC1 is a histone-fold protein that interacts with other histone-fold proteins to bind DNA in a sequence-independent manner. These histone-fold protein dimers combine within larger enzymatic complexes for DNA transcription, replication, and packaging. CHRAC1 is a histone-fold protein that interacts with other histone-fold proteins to bind DNA in a sequence-independent manner. These histone-fold protein dimers combine within larger enzymatic complexes for DNA transcription, replication, and packaging. [supplied by OMIM]

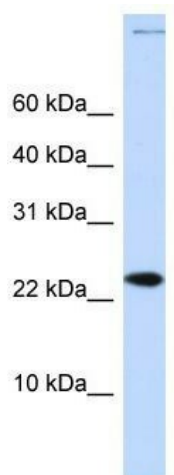


[View online »](#)

**Synonyms:** CHARC1; CHARC15; CHRAC-1; CHRAC-15; CHRAC15; YCL1

**Note:** Immunogen Sequence Homology: Human: 100%; Yeast: 100%; Mouse: 90%; Dog: 82%; Pig: 82%; Rat: 82%; Horse: 82%; Bovine: 82%

**Product images:**



WB Suggested Anti-CHRAC1 Antibody Titration:  
0.2-1 ug/ml; ELISA Titer: 1: 62500; Positive  
Control: Human brain