

Product datasheet for **TA345210**

PHF21A Rabbit Polyclonal Antibody

Product data:

Product Type:	Primary Antibodies
Applications:	WB
Recommended Dilution:	WB
Reactivity:	Human
Host:	Rabbit
Isotype:	IgG
Clonality:	Polyclonal
Immunogen:	The immunogen for anti-PHF21A antibody: synthetic peptide directed towards the N terminal of human PHF21A. Synthetic peptide located within the following region: MELQTLQEALKVEIQVHQKLVAQMKQDPQNADLKKQLHELQAKITALSEK
Formulation:	Liquid. Purified antibody supplied in 1x PBS buffer with 0.09% (w/v) sodium azide and 2% sucrose. <i>Note that this product is shipped as lyophilized powder to China customers.</i>
Purification:	Affinity Purified
Conjugation:	Unconjugated
Storage:	Store at -20°C as received.
Stability:	Stable for 12 months from date of receipt.
Predicted Protein Size:	70 kDa
Gene Name:	PHD finger protein 21A
Database Link:	NP_057705 Entrez Gene 51317 Human Q96BD5



[View online »](#)

Background: PHF21A (BHC80) is a component of a BRAF35/histone deacetylase complex (BHC) that mediates repression of neuron-specific genes through the cis-regulatory element known as repressor element-1 (RE1) or neural restrictive silencer (NRS). BHC80 is a component of a BRAF35 (MIM 605535)/histone deacetylase (HDAC; see MIM 601241) complex (BHC) that mediates repression of neuron-specific genes through the cis-regulatory element known as repressor element-1 (RE1) or neural restrictive silencer (NRS) (Hakimi et al., 2002 [PubMed 12032298]). [supplied by OMIM]

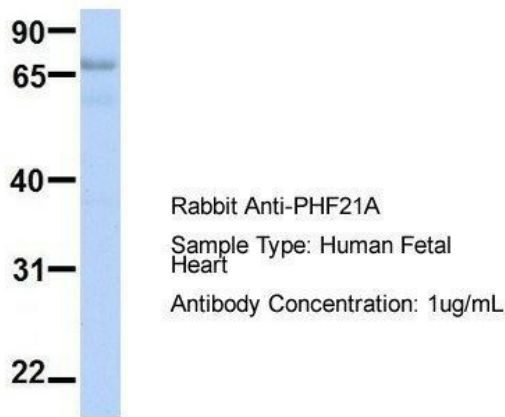
Synonyms: BHC80; BM-006

Note: Immunogen Sequence Homology: Dog: 100%; Pig: 100%; Rat: 100%; Human: 100%; Mouse: 100%; Rabbit: 100%; Zebrafish: 100%; Guinea pig: 100%

Protein Families: Druggable Genome, Transcription Factors

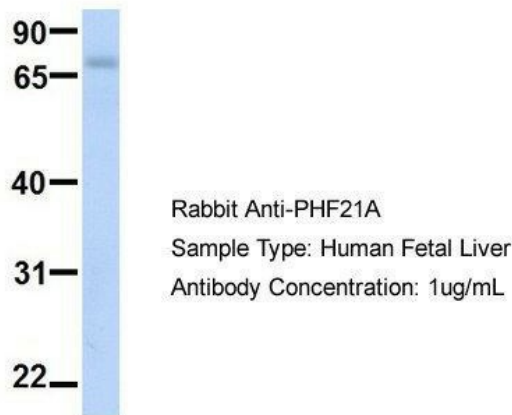
Product images:

PHF21A



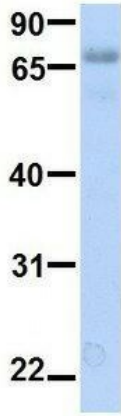
Host: Rabbit; Target Name: PHF21A; Sample Tissue: Human Fetal Heart; Antibody Dilution: 1.0 ug/ml

PHF21A



Host: Rabbit; Target Name: PHF21A; Sample Tissue: Human Fetal Liver; Antibody Dilution: 1.0 ug/ml

PHF21A



Rabbit Anti-PHF21A
Sample Type: Human Fetal Lung
Antibody Concentration: 1ug/mL

Host: Rabbit; Target Name: PHF21A; Sample
Tissue: Human Fetal Lung; Antibody Dilution: 1.0
ug/ml



WB Suggested Anti-PHF21A Antibody Titration:
0.2-1 ug/ml; ELISA Titer: 1: 312500; Positive
Control: HT1080 cell lysate; PHF21A is supported
by BioGPS gene expression data to be expressed
in HT1080