

Product datasheet for **TA345207**

ERGIC2 Rabbit Polyclonal Antibody

Product data:

| | |
|-------------------------|---|
| Product Type: | Primary Antibodies |
| Applications: | WB |
| Recommended Dilution: | WB |
| Reactivity: | Human |
| Host: | Rabbit |
| Isotype: | IgG |
| Clonality: | Polyclonal |
| Immunogen: | The immunogen for anti-ERGIC2 antibody: synthetic peptide directed towards the N terminal of human ERGIC2. Synthetic peptide located within the following region: MRRLNRKKTLSLVKELDAFPKVPESYVETSASGGTVSLIAFTTMALLTIM |
| Formulation: | Liquid. Purified antibody supplied in 1x PBS buffer with 0.09% (w/v) sodium azide and 2% sucrose. <i>Note that this product is shipped as lyophilized powder to China customers.</i> |
| Purification: | Protein A purified |
| Conjugation: | Unconjugated |
| Storage: | Store at -20°C as received. |
| Stability: | Stable for 12 months from date of receipt. |
| Predicted Protein Size: | 43 kDa |
| Gene Name: | ERGIC and golgi 2 |
| Database Link: | NP_057654 Entrez Gene 51290 Human Q96RQ1 |
| Background: | ERGLon Channel2 possibly play role in transport between endoplasmic reticulum and Golgi. ERGLon Channel2 is downregulated in prostate cancer. ERGLon Channel2 may play an important role in the growth and tumorigenicity of PC-3 prostate tumor cells. Ectopic expression of a partial sequence of ERGLon Channel2 as a VP22-fusion protein in prostate cancer cell line, PC-3, induced cellular senescence. Interferon-beta (IFN-beta) and a number of IFN-inducible genes were upregulated by the ERGLon Channel2-VP22 fusion protein. |

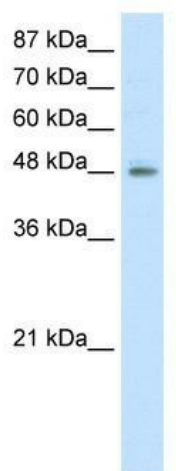


[View online »](#)

Synonyms: cd002; CDA14; Erv41; PTX1

Note: Immunogen Sequence Homology: Human: 100%; Bovine: 100%; Dog: 93%; Pig: 93%; Rat: 93%; Horse: 93%; Mouse: 93%; Rabbit: 93%; Zebrafish: 93%; Guinea pig: 87%

Product images:



WB Suggested Anti-ERGIC2 Antibody Titration: 2.5 ug/ml; ELISA Titer: 1: 62500; Positive Control: HepG2 cell lysate