

Product datasheet for TA345206

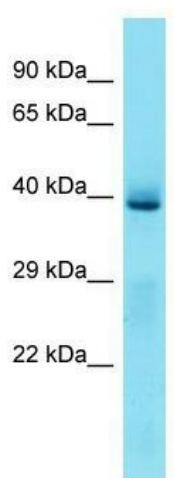
Klf3 Rabbit Polyclonal Antibody

Product data:

Product Type:	Primary Antibodies
Applications:	WB
Recommended Dilution:	WB
Reactivity:	Mouse
Host:	Rabbit
Isotype:	IgG
Clonality:	Polyclonal
Immunogen:	The immunogen for Anti-Klf3 antibody is: synthetic peptide directed towards the N-terminal region of Mouse Klf3. Synthetic peptide located within the following region: MLMFDVPVKQEAMDPVSVSFPSNYIESMKPNKYGVIYSTPLPKFFQTP
Formulation:	Liquid. Purified antibody supplied in 1x PBS buffer with 0.09% (w/v) sodium azide and 2% sucrose. <i>Note that this product is shipped as lyophilized powder to China customers.</i>
Purification:	Affinity Purified
Conjugation:	Unconjugated
Storage:	Store at -20°C as received.
Stability:	Stable for 12 months from date of receipt.
Predicted Protein Size:	38 kDa
Gene Name:	Kruppel-like factor 3 (basic)
Database Link:	NP_032479 Entrez Gene 16599 Mouse Q60980
Background:	Klf3 binds to the CACCC box of erythroid cell-expressed genes. It may play a role in hematopoiesis.
Synonyms:	BKLF; MGC48279; TEF-2
Note:	Immunogen Sequence Homology: Rat: 100%; Horse: 100%; Human: 100%; Bovine: 100%; Rabbit: 100%; Pig: 93%; Guinea pig: 93%; Dog: 92%; Mouse: 86%



[View online »](#)

Product images:

Host: Rabbit; Target Name: Klf3; Sample Tissue: Mouse Liver lysates; Antibody Dilution: 1.0 ug/ml